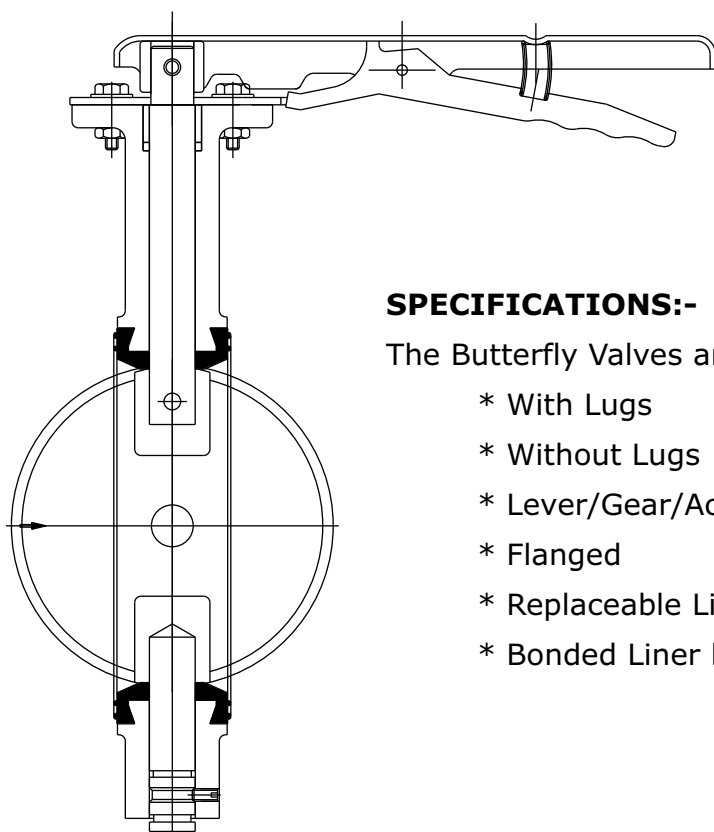




BUTTERFLY VALVES:-

The typical butterfly valve consist of a disc which can rotate around a shaft in housing. The disc closes against a ring seal to close off flow. Various actuating mechanisms such as the lever, gear, etc are use to operate the valve. These are suitable for all kind of industries, especially Shipbuilding, Offshore, Water Treatment Plants, Petrochemical Industries, and Refineries etc.



SPECIFICATIONS:-

The Butterfly Valves are available with following specifications:

- * With Lugs
- * Without Lugs
- * Lever/Gear/Actuator Operated
- * Flanged
- * Replaceable Liner
- * Bonded Liner but Replaceable with Renewable Liner

VALVE TYPE & SIZE RANGE :

VALVE TYPE	OPERATING MECHANISM	SIZE RANGE
WAFER TYPE WITHOUT LUG	HAND LEVER	40mm-300mm
	GEAR OPERATED	200mm-600mm
WAFER TYPE WITH LUG	HAND LEVER	40mm-300mm
	GEAR OPERATED	200mm-600mm
WITH FLANGED ENDS	HAND LEVER	40mm-300mm
	GEAR OPERATED	200mm-600mm

PRESSURE RATING

DN 40 TO 300	:	(CI)	13.8 BAR
DN 350 & ABOVE	:		10.3 BAR

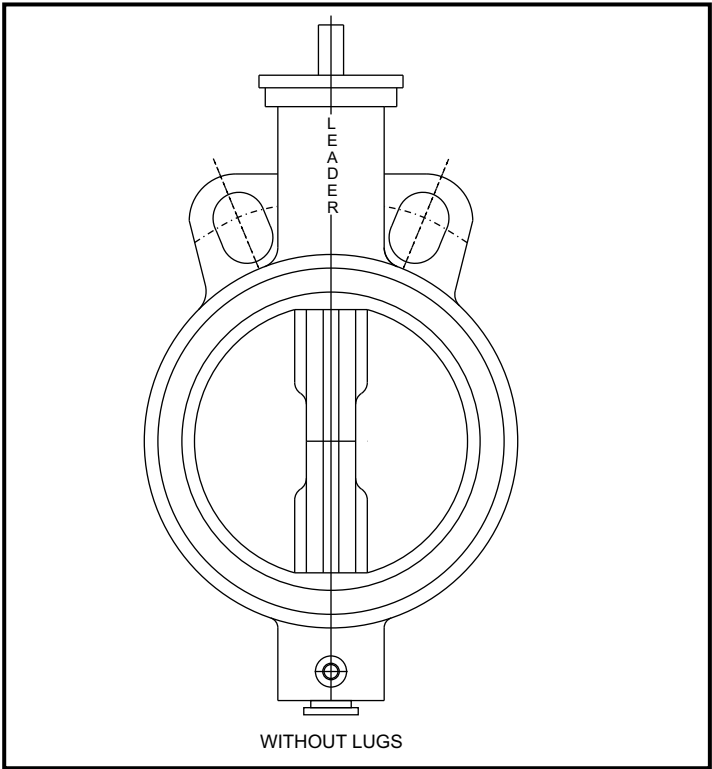
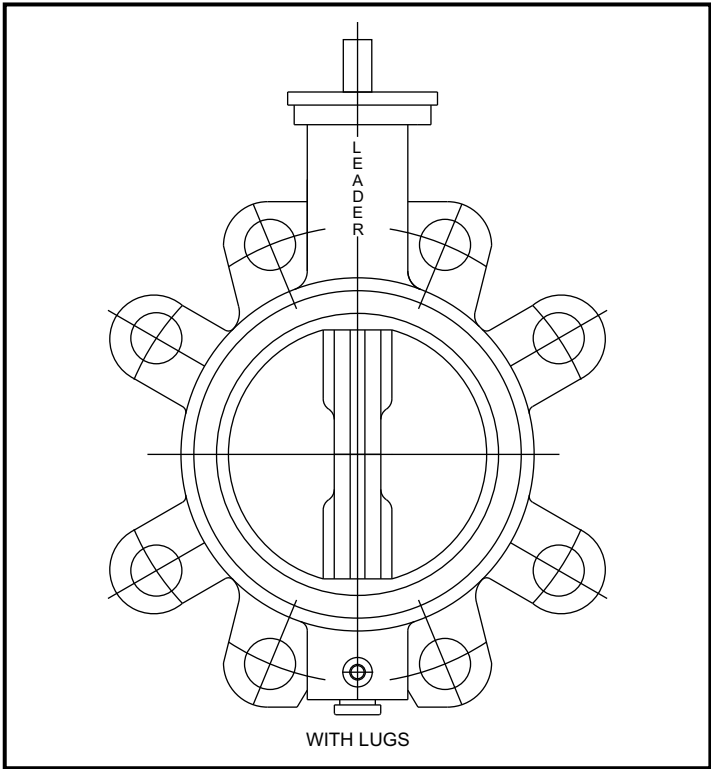
TEMPERATURE RATING:

NBR LINER:	120°C
EPDM LINER:	148°C

PRESSURE RATING : (CS)

DN 40 TO DN 400	:	(C.S.)	15 Bar
:24	:		11 BAR

NOTE: The above data is subject to change without notice due to our continuing product improvement program.

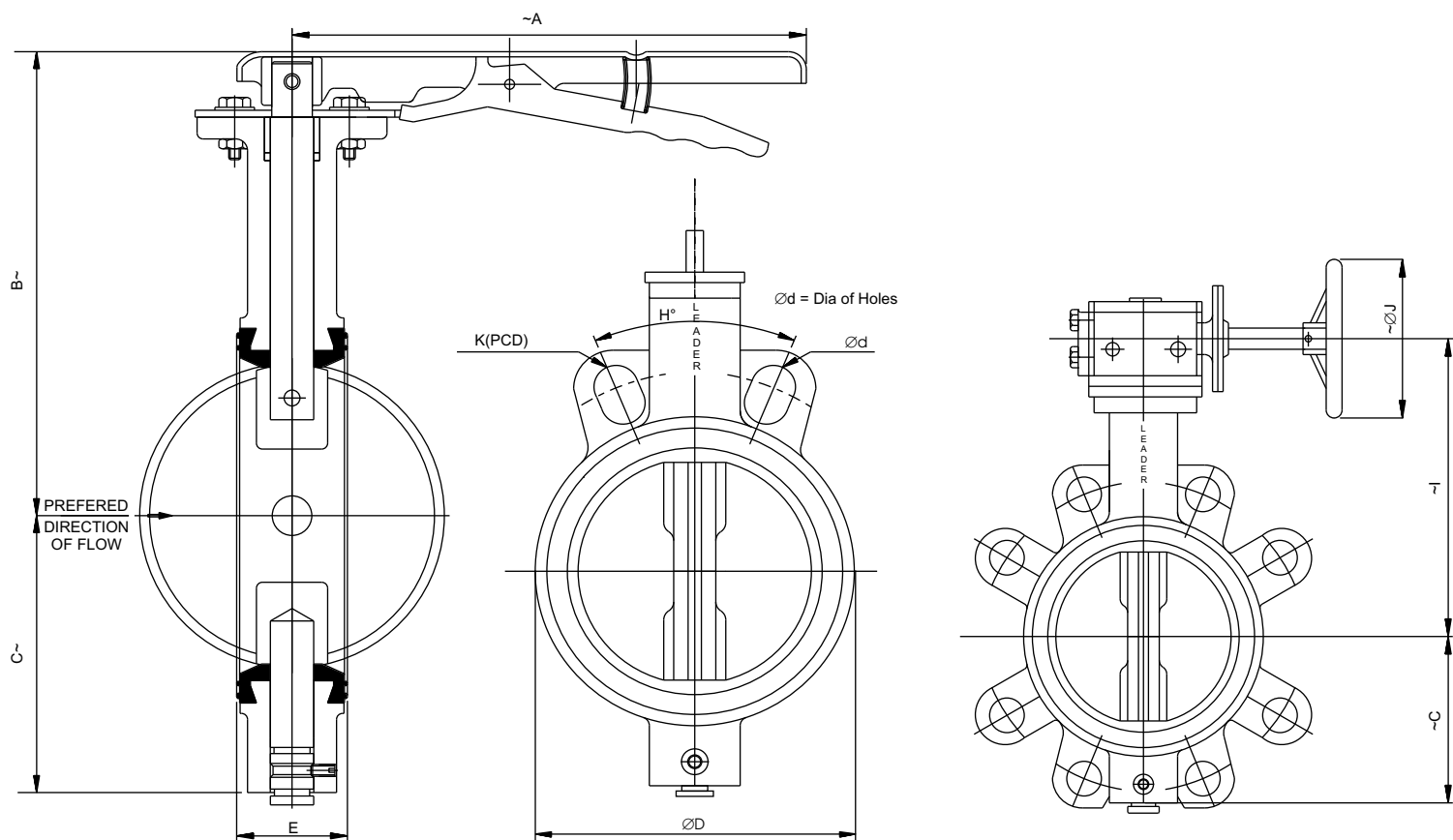


SPECIFICATIONS:
WAFER TYPE, WITH LUGS
SUITABLE FOR MOUTHING BETWEEN
FLANGES AS PER ASME B16.1
CL – 125 (CI) /
FLANGES AS PER ASME B16.5
CL150 (CS)

SPECIFICATION:
WAFER TYPE, WITHOUT LUGS
SUITABLE FOR MOUTHING BETWEEN
FLANGES AS PER ASME B16.1
CL 125 (CI)/BS 4504 PN10, 16 &
BS10 TABLE D, E, F, H, &
ASME B16.5 CL 150 (CS)

MATERIAL	
PART	MATERIAL SPECIFICATION
BODY	CAST IRON (CI) TO EN 1561 Gr. GJL200 CAST STEEL (CS) TO ASTM A216 Gr. WCB CAST STAINLESS STEEL (CSS) TO ASTM A351 Gr. CF8, CF8M
DISC	SG IRON TO BS 2789 Gr. 500/7 CSS TO ASTM A351 Gr. CF8, CF8M
STEM	AL. BRONZE TO BS 1400 Gr. AB1 / AB2
LINER	STAINLESS STEEL (SS) TO ASTM A276 TYPE 410, 304, 316 NBR, EPDM

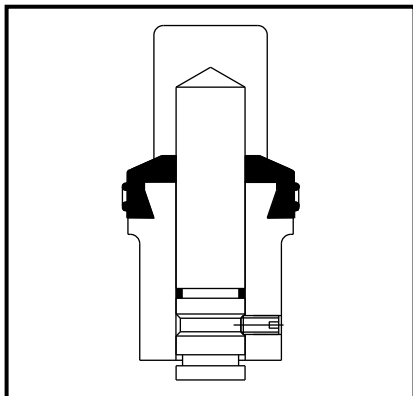
NOTE: The above data is subject to change without notice due to our continuing product improvement program.



* DRILLING AS PER ASME B16.5 CL-150/
ASME B16.1 CL-125

VALVE SIZE	A~	B~	C~	φD	E	K*	φd	H°	I~	~φJ	~Wt.
40mm	289	120	64	82	33	98.5 ± 1.0	15.8	90	-	-	-
50mm	289	133	75	90	43	120.6 ± 1.0	19	90	-	-	-
65mm	289	150	96	105	46	139.7 ± 1.0	19	90	-	-	-
80mm	289	153	100	120	46	152.4 ± 1.0	19	90	-	-	-
100mm	289	200	120	144	52	190.5 ± 1.0	19	45	-	-	-
125mm	289	200	140	175	56	215.9 ± 1.0	22.3	45	-	-	-
150mm	289	237	147	200	56	241.3 ± 1.0	22.3	45	-	-	-
200mm	356	235	178	255	60	298.4 ± 2.0	22.3	45	275	203	-
250mm	406	290	214	325	68	361.9 ± 2.0	25.4	30	325	203	-
300mm	406	330	260	374	78	431.8 ± 2.0	25.4	30	364	203	-
350mm			281	406	92	476.2 ± 2.0	28.6	30	368	203	-
400mm			315	456	102	539.8 ± 2.0	28.6	22.5	408	310	-
450mm			340	506	114	577.8 ± 3.0	31.8	22.5	451	450	-
500mm			365	561	127	635 ± 3.0	31.8	18	473.8	450	-
600mm			435	654	154	749.3 ± 3.0	35	18	559	500	-

NOTE: The above data is subject to change without notice due to our continuing product improvement program.

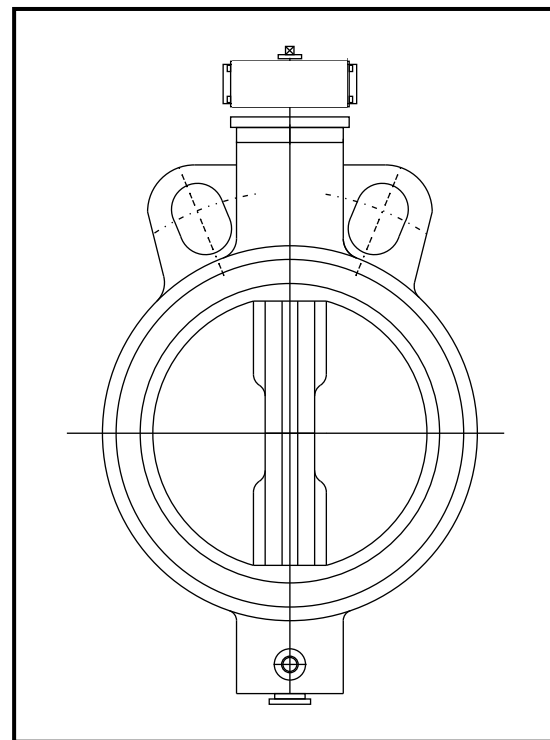
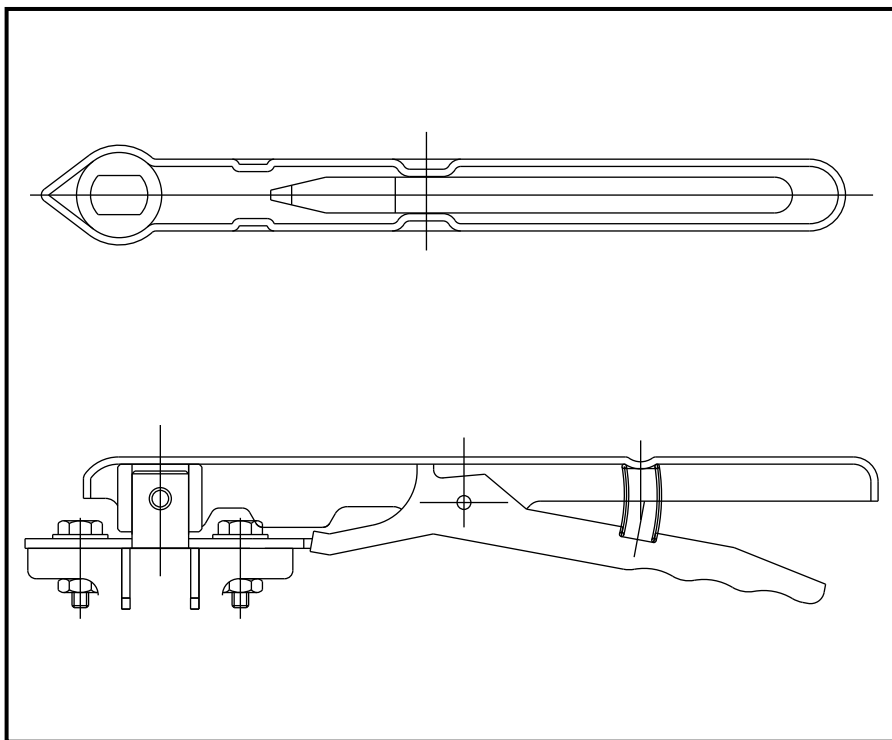


**WITH
REPLACEABLE LINER**

The Valve Body is Provided with a renewable rubber Liner beyond the flange facings. There is an adjusted Shaft & easily during renewal.

ADVANTAGES:

- * Tight shut - off
- * Corrosion Proof
- * Flange Packing not necessary



**WITH PNEUMATIC
ACTUATOR**

Handle of Sheet Metal spring loaded trigger device which when released seats the valve in one of Nine positions from open to fully Close.

SPECIFIC APPLICATION:

- * SHIP BUILDING INDUSTRY
- * WATER TREATMENT PLANTS
- * GENERAL INDUSTRIAL SYSTEM
- * PETRO-CHEMICAL INDUSTRY &
- * REFINERIES

Double Acting Pneumatic Actuator
Air to Open / Air to Close

Single Acting Pneumatic actuator
Air to Open / Spring Return
Air to Close / Spring Return

Standard Control Pressure
80 Psi.

NOTE: The above data is subject to change without notice due to our continuing product improvement program.