



ISO 9001-2008
IBR Approved
Fire Safe Appr.

Flowjet®

INDUSTRIAL VALVES



Flowjet® Industrial Valves “Built To Perfection”

Flowjet®

**FORGED STEEL BALL VALVES
ASTMA 105 / ASTMA 351 GR. CF8 / CF8M**

*Specially designed and
meant for Gas, Air, Oil,
Steam, Chemicals and
Petrochemicals.*



Salient Features

- Three piece design
- Blow out proof Stem
- Slotted PTFE Seats
- Down stem sealing and floating ball
- Quarter turn shut off
- Temperature -20°C to +210°C.
- Easy maintenance with simply interchangeable spares.

Flowjet Three Piece Design Ball Valves have the most easiest maintenance. To carry out any maintenance or to replace PTFE ring set, just remove three bolts and loose the forth one, the body part will Swung away. This is extremely advantageous as the valve does not have to be removed out of the line.



6D-0918



6D-0918

ISO 9001-2008

IBR Approved

Fire Safe Appr.

Flowjet® Industrial Valves “Built To Perfection”

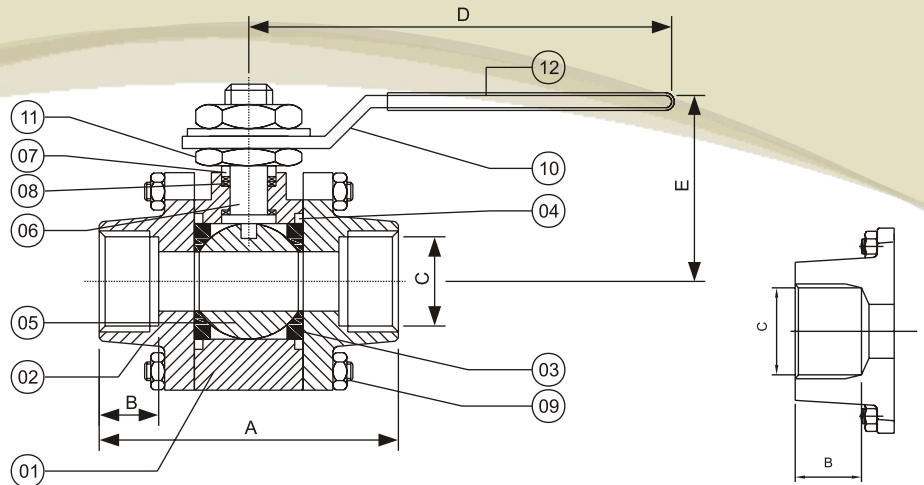
Flowjet®

Forged Steel Three Piece Design Ball Valve

Regular Port, Screwed End,
BSP/NPT, Socketweld,
Butt-weld End
ANSI Class - 800#

Flanged End
ANSI Class - 150# / 300#
Flanged to ANSI B 16.5 RF

Size Range : 6 mm to 50 mm



MATERIAL SPECIFICATION

NO.	PART NAME	QTY.	MATERIALS	
1.	BODY	1	ASTMA A 105	STAINLESS STEEL ASTMA 351 GR. 304-316
2.	BODY ADAPTOR	2		
3.	BALL SEAT	2	VIRGIN PTFE	
4.	BODY SEAL	2	VIRGIN PTFE	
5.	BALL	1	ASTMA A 351 GR. CF8M	
6.	STEM	1	S.S. AISI 316	
7.	GLAND	1	S.S. AISI 316	
8.	GLAND PACKING	3	35% CARBON FILLED PTFE	
9.	STUD BOLT	4	SAE J4 29 HI-TENSILE	
10.	LEVER	1	M.S.	S.S AISI 304
11.	LEVER NUT	1	S.S. AISI 304	
12.	LEVER SLEEVE	1	SPECIAL PVC	

TEST PRESSURE

TEST	MEDIUM	PRESSURE
SEAT	HYDRAULIC	70 KG / CM ²
SEAT	AIR	5.5 TO 7.0 KG / CM ²
BODY	HYDRAULIC	210 KG / CM ²

MATERIALS CHEMICAL COMPOSITION

MAT	C	SI	MN	P	S
ASTM A 105	MAX 0.35	MAX 0.35	0.6 - 1.05	MAX 0.04	MAX 0.05

• GLASS PTFE, CARBON PTFE, BRONZE PTFE
AVAILABLE ON REQUEST.

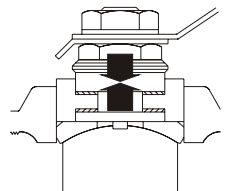
DIMENSIONS (IN MM)

Valve / Size	A	B	C	D	E
6	65	11.5	13.80 13.60	154	66
10	67.5	14	18.30 18.10	154	66
15	72	15	21.72 21.97	160	66
20	79	20	27.30 27.05	155	70
25	93	22	34.03 33.78	154	70
32	107	22	43.00 42.60	194	95
40	110	22	48.90 48.64	194	95
50	125	22	61.11 61.36	194	95

• Mfg. Standard : BS 5351 / API 6D • Testing Standard : API 598
• Threads : BSP / BSPT / NPT as per gauge size.

BLOW OUT PROOF STEM

Flowjet Valves is providing maximum safety with bottom entry Stem. Internal pressure works to help make the seal rather than break it as in a top entry Stem Design. The design ensures that Stem blow out does not take place. Safeguarding personnel working in it's vicinity. Opposed Belleville washers act as a spring to Compensate for wear & tear expansion and contraction.



SPECIAL FEATURES

Flowjet Valves are provided with three interlaced PTFE rings clubbed together, triple locking PTFE rings to make zero leak from gland. This act as a cushion and suppresses pressure and helps in zero leak performance from gland.

AS WE CONTINUOUSLY ENDEAVOUR TO IMPROVE OUR PRODUCTS, THE DATA, DIMENSIONS, SPECIFICATIONS & DRAWINGS GIVEN HEREIN ARE SUBJECT TO CHANGE.

Manufactured By :

Flowjet VALVES PVT. LTD.

Dealer :-

TUBES & VALVES MFG CO , Chennai

Email :- sales@tubesandvalves.com

Ph:- 80120 1166

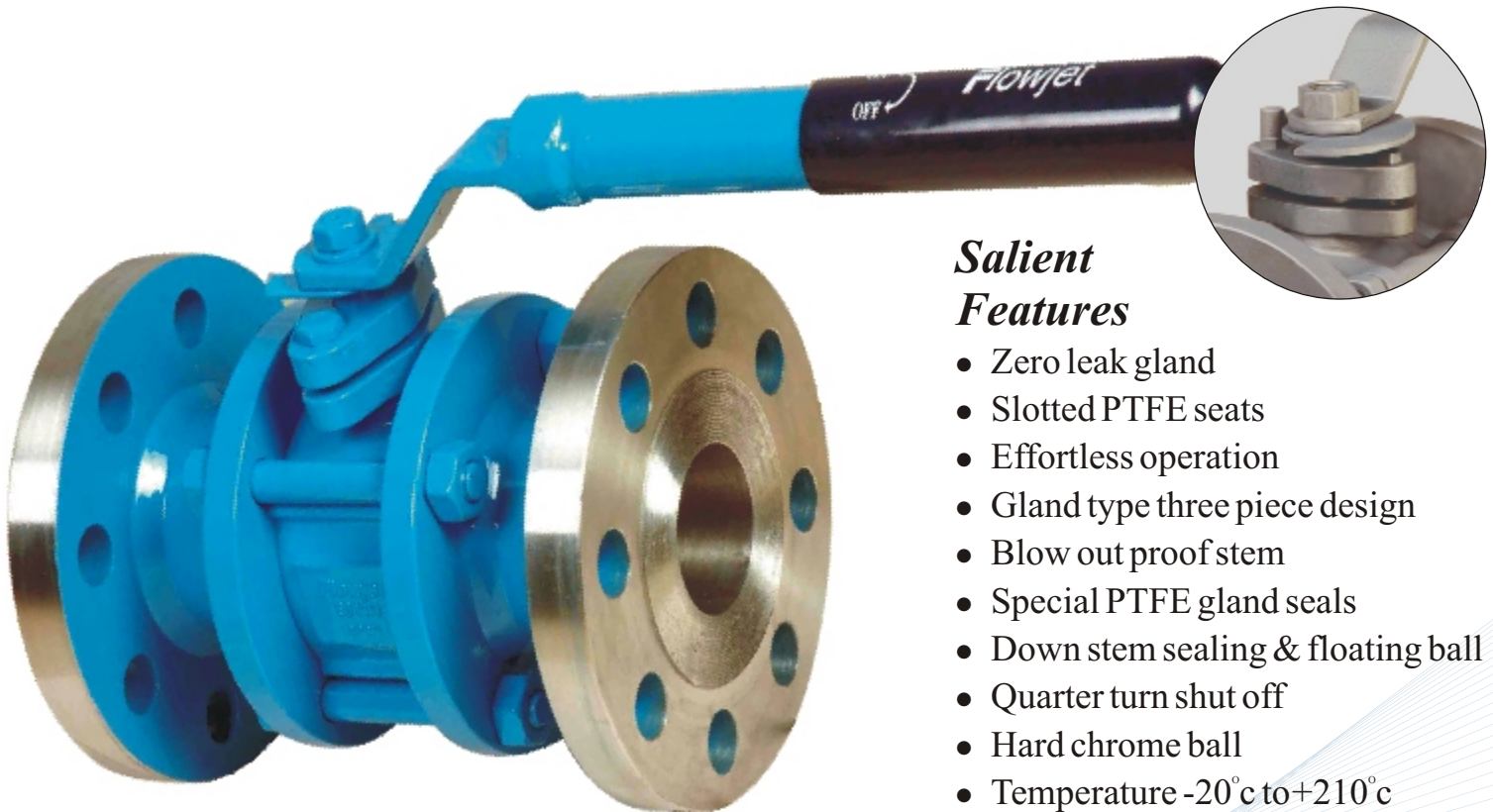
Flowjet®

CAST IRON - CAST CARBON STEEL GLAND TYPE BALL VALVES

Special Features Zero Leak Gland

Flowjet Valves are provided with three interlaced PTFE rings clubbed together, triple locking PTFE rings to make zero leak from gland. This act as a cushion and suppresses pressure and helps in zero leak performance from gland.

*for
Extrusion Oil Refineries,
Petrochemical, Solvent,
Chemical and Process Industries.*



Salient Features

- Zero leak gland
- Slotted PTFE seats
- Effortless operation
- Gland type three piece design
- Blow out proof stem
- Special PTFE gland seals
- Down stem sealing & floating ball
- Quarter turn shut off
- Hard chrome ball
- Temperature -20°C to +210°C
- Can be fitted with actuators



6D-0918



6D-0918

ISO 9001-2008
IBR Approved
Fire Safe Appr.

Flowjet® Industrial Valves “Built To Perfection”

Flowjet®

Cast Iron-Cast Carbon Steel Gland Type Ball Valves Three Piece Design

Full Port, Flanged end
ANSI Class - 150# / 300#

Face to Face
ANSI B 16.10

End Connection
Flanged to
ANSI B 16.5 RF / 'E' / 'F' Table

Size Range : 15mm to 300 mm

ANSI CLASS - 150 DIMENSIONS (IN MM)

Size	A	D	E	B	NB	C
15	90	90	60.5	35	12.5	10
20	100	100	70	43	19	10.90
25	110	110	79.5	51	25	11.60
40	125	125	98.5	73	38	14.70
50	150	150	120.5	92	50	16.30
65	180	180	140	105	63	17.90
80	190	190	152.5	127	75	19.50
100	230	230	190.5	157	100	24.30

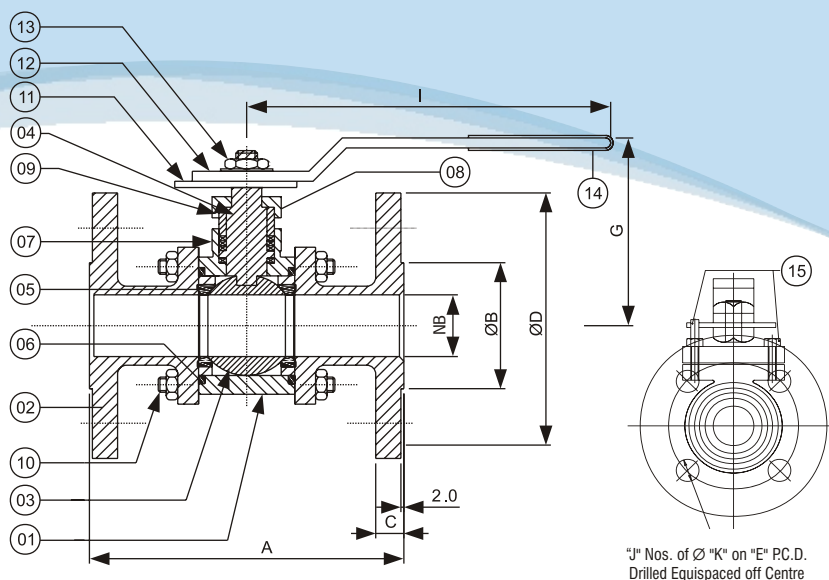
DIMENSIONS (IN MM)

Size	G	I	J	K
15	55	135	4	16
20	60	135	4	16
25	75	225	4	16
40	115	450	4	16
50	115	450	4	19
65	185	550	4	19
80	185	550	4	19
100	195	550	8	19

TEST PRESSURE

TEST	MEDIUM	PRESSURE
SEAT	HYDRAULIC	21 KG / CM ²
SEAT	AIR	5.5 TO 7.0 KG / CM ²
BODY	HYDRAULIC	30 KG / CM ²

• GLASS PTFE, CARBON PTFE, BRONZE PTFE
AVAILABLE ON REQUEST.



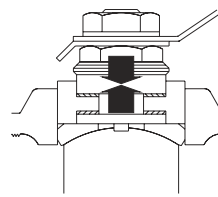
MATERIAL SPECIFICATION

NO.	PART NAME	QTY.	MATERIAL		
1.	BODY	1	CAST IRON	MILD STEEL	CAST STEEL
2.	BODY CONNECTOR	2			
3.	BALL	1	AISI304	AISI304	AISI304
4.	STEM	1	AISI410	AISI410	AISI410
5.	BODY SEAT	2	VIRGIN PTFE		
6.	CONNECTOR SEAL	2			
7.	STEAM SEAL	1+3			
8.	GLAND	1	CAST IRON	MILD STEEL	ASTM A 216 GR WCB
9.	GLAND COLOUR	1	AISI410	AISI410	AISI410
10.	BODY STUD & NUT	4x2	ASTM A 193 GR B7 / ASTM A 194 GR. 2H		
11.	STOPPER PLATE	1	M.S.	M.S.	M.S.
12.	LEVER	1	M.S.	M.S.	M.S.
13.	LEVER NUT	1	ASTM A 194 GR 2H		
14.	LEVER SLEEVE	1	SPECIAL PVC		
15.	GLAND BOLT-STOPPER	2	M.S.		

• Mfg. Standard: API 6D/BS 5351 • Testing Standard: API 598/BS 5146

BLOW OUT PROOF STEM

Flowjet Valves is providing maximum safety with bottom entry Stem. Internal pressure works to help make the seal rather than break it as in a top entry Stem Design. The design ensures that Stem blow out does not take place. Safeguarding personnel working in it's vicinity. Opposed Belleville washers act as a spring to Compensate for wear & tear expansion and contraction.



SPECIAL FEATURES

Flowjet Ball Valves are provided with heavy duty stem and extra longer handle, which gives easy and smooth operation. This reduces the friction and operating torque, and there by extends the life of the valves.

AS WE CONTINUOUSLY ENDEAVOUR TO IMPROVE OUR PRODUCTS, THE DATA, DIMENSIONS, SPECIFICATIONS & DRAWINGS GIVEN HEREIN ARE SUBJECT TO CHANGE.

Manufactured By :

Flowjet VALVES PVT. LTD.

Dealer :-

TUBES & VALVES MFG CO , Chennai

Email :- sales@tubesandvalves.com

Ph:- 80120 1166

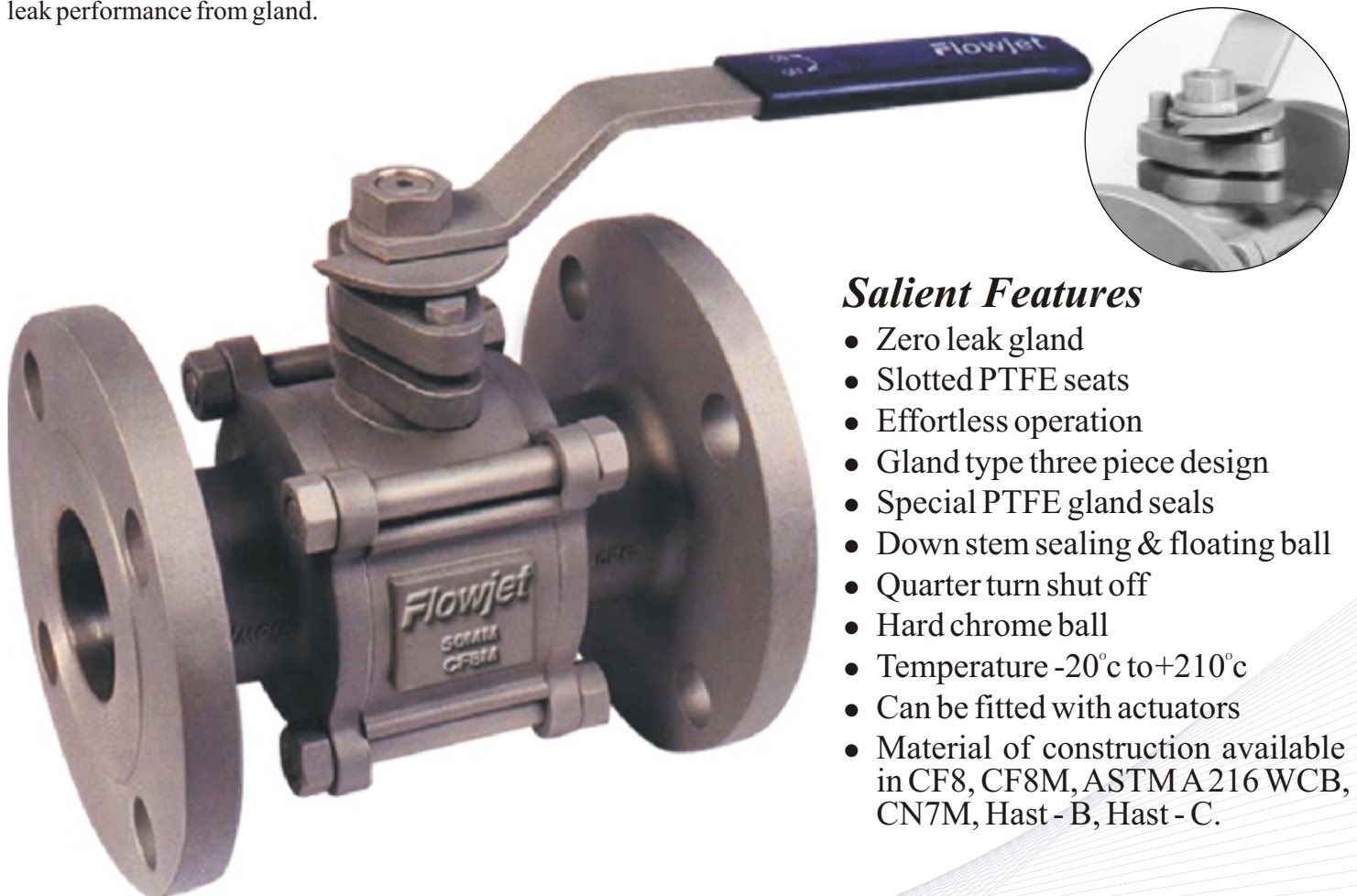
Flowjet®

INVESTMENT CASTING CF8 / CF8M / WCB GLAND TYPE BALL VALVES

Special Features Zero Leak Gland

Flowjet Valves are provided with three interlaced PTFE rings clubbed together, triple locking PTFE rings to make zero leak from gland. This act as a cushion and suppresses pressure and helps in zero leak performance from gland.

*Specially
designed & meant for Chemical,
Air, Gas, Oil and Petrochemicals.*



Salient Features

- Zero leak gland
- Slotted PTFE seats
- Effortless operation
- Gland type three piece design
- Special PTFE gland seals
- Down stem sealing & floating ball
- Quarter turn shut off
- Hard chrome ball
- Temperature -20°C to +210°C
- Can be fitted with actuators
- Material of construction available in CF8, CF8M, ASTM A216 WCB, CN7M, Hast - B, Hast - C.



6D-0918



6D-0918

ISO 9001-2008

IBR Approved

Fire Safe Appr.

Flowjet® Industrial Valves “Built To Perfection”

Flowjet®

Investment Casting Gland Type Ball Valve Three Piece Design

Full Port, Flanged End

ANSI Class - 150#

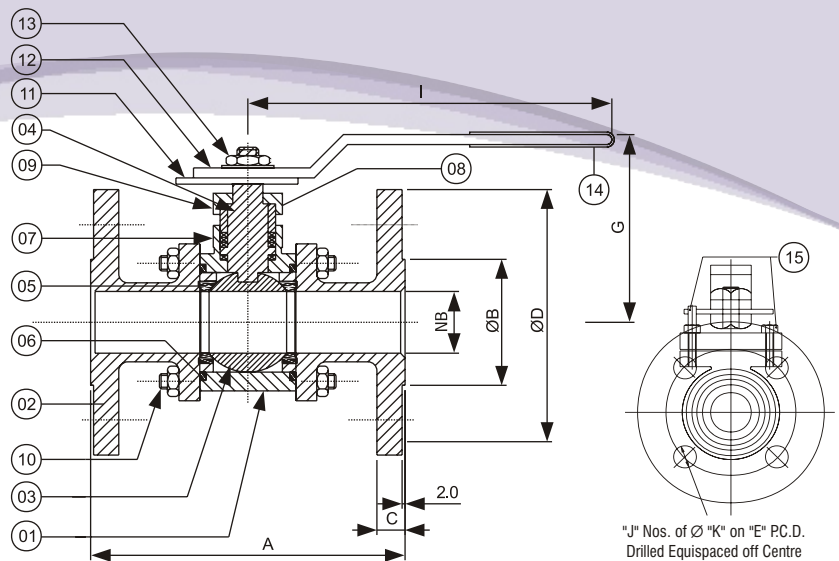
Face to Face : ANSI B 16.10

End Connection

Flanged to

ANSI B 16.5 RF / 'E' / 'F' Table

Size Range : 15 mm to 100 mm



ANSI CLASS - 150 DIMENSIONS (IN MM)

Size	A	D	E	B	NB	C
15	108	90	60.5	35	12.5	10
20	117	100	70	43	19	10.90
25	127	110	79.5	51	25	11.60
40	165	125	98.5	73	38	14.70
50	178	150	120.5	92	50	16.30
65	190	180	140	105	63	17.90
80	203	190	152.5	127	75	19.50
100	229	230	190.5	157	100	24.30

DIMENSIONS (IN MM)

Size	G	I	J	K
15	85	153	4	16
20	65	153	4	16
25	95	153	4	16
40	125	196	4	16
50	125	251	4	19
65	150	270	4	19
80	150	270	4	19
100	195	445	8	19

TEST PRESSURE

TEST	MEDIUM	PRESSURE
SEAT	HYDRAULIC	21 KG / CM ²
SEAT	AIR	5.5 TO 7.0 KG / CM ²
BODY	HYDRAULIC	30 KG / CM ²

MATERIALS CHEMICAL COMPOSITION

MATERIALS	C	MN	SI	CR	MO	P	S	NI
ASTM A 351 CF8	Max.0.08	Max.1.50	Max. 2.00	18.0 to 21.0	Max.0.50	Max. 0.04	Max. 0.04	8.00 to 11.0
ASTM A 351 CF8 M	Max.0.03	Max.1.50	Max.1.50	18.0 to 21.0	2.0 to 3.0	Max. 0.04	Max. 0.04	9.00 to 12.0
ASTM A 216 WCB	Max.0.30	Max.1.00	Max. 0.60	Max.0.4	Max. 0.25	Max. 0.04	Max. 0.045	Max. 0.5

AS WE CONTINUOUSLY ENDEAVOUR TO IMPROVE OUR PRODUCTS, THE DATA, DIMENSIONS, SPECIFICATIONS & DRAWINGS GIVEN HEREIN ARE SUBJECT TO CHANGE.

Manufactured By :

Flowjet VALVES PVT. LTD.

Dealer :-

TUBES & VALVES MFG CO , Chennai

Email :- sales@tubesandvalves.com

Ph:- 80120 1166

MATERIAL SPECIFICATION

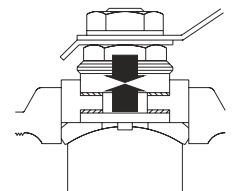
NO.	PART NAME	QTY.	MATERIAL		
1.	BODY	1	ASTM A	ASTM A	ASTM A
2.	BODY CONNECTOR	2	216WCB	351CF8	351CF8M
3.	BALL	1	AISI304	AISI304	AISI316
4.	STEM	1	AISI410	AISI304	AISI316
5.	BODY SEAT	2	VIRGIN PTFE		
6.	CONNECTOR SEAL	2			
7.	STEAM SEAL	1+3			
8.	GLAND	1	ASTM A 216 WCB	ASTM A 351 CF8	ASTM A 351 CF8M
9.	GLAND COLOUR	1	AISI304	AISI304	AISI316
10.	BODY STUD & NUT	4x2	ASTM A 193 GR. B7 / 2H	S.S. 304	S.S. 304
11.	STOPPER PLATE	1	M.S.	S.S. 304	S.S. 304
12.	LEVER	1	M.S.	S.S. 304	S.S. 304
13.	LEVER NUT	1	S.S. 304	ASTM A 194 GR 2H	
14.	LEVER SLEEVE	1	SPECIAL PVC		
15.	GLAND BOLT-STOPPER	2	M.S.	S.S. 304	S.S. 304

● Mfg. Standard: API 6D/BS 5351 ● Testing Standard: API 598/BS 5146

BLOW OUT PROOF STEM

Flowjet Valves is providing maximum safety with bottom entry Stem. Internal pressure works to help make the seal rather than break it as in a top entry Stem Design. The design ensures that Stem blow out does not take place. Safeguarding personnel working in it's vicinity. Opposed Belleville washers act as a spring to Compensate for wear & tear expansion and contraction.

● GLASS PTFE, CARBON PTFE, BRONZE PTFE AVAILABLE ON REQUEST.



Flowjet®

INVESTMENT CASTING CF8 / CF8M / WCB BALL VALVES

*It Gives 100% Guarantee
of Materials, Smooth
Finishing & Working
with very low Torque.*

*Specially
designed & meant for Chemical,
Air, Gas, Oil and
Petrochemicals.*



Salient Features

- Quarter turn shut off
- Blow out proof stem
- Special PTFE gland seals
- Floating ball
- Hard chrome ball
- Temperature -20°C to +210°C
- Can be fitted with actuators
- Low torque
- Smooth finish
- Full flow capacity
- Compact design
- Material of construction available in CF8, CF8M, ASTM A216 WCB, CN7M, Hast - B, Hast - C.



6D-0918



6D-0918

ISO 9001-2008

IBR Approved

Fire Safe Appr.

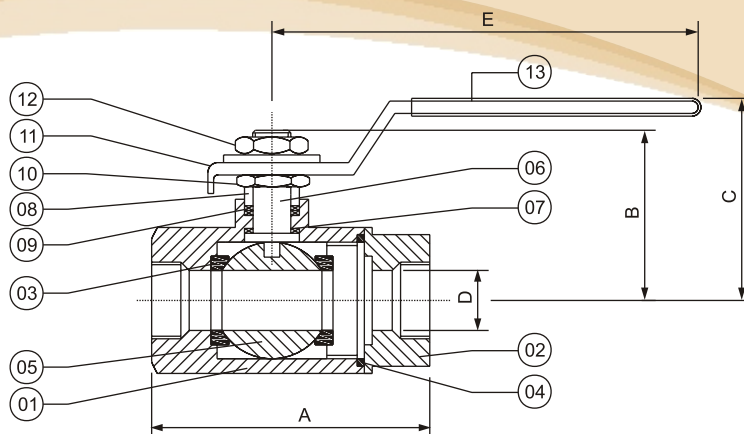
Flowjet® Industrial Valves “Built To Perfection”

Flowjet®

Investment Casting One Piece Design Ball Valve

Full Port, Screwed End,
BSP/NPT, Socketweld,
Butt-weld End

Size Range :
6 mm to 50 mm



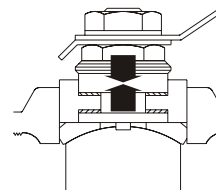
DIMENSIONS (IN MM)

SIZE	A	B	C	D	E
6	65	36	46	6	113
10	65	36	46	9	113
15	65	36	46	12.6	113
20	77	46	60	19	145
25	85	46	66	24	145
32	102	72	90	30	185
40	102	72	95	35	185
50	126	82	102	46	185

- Mfg. Standard: API 6D/BS 5351 ● Testing Standard: API 598/BS 5146
- Threads : BSP / BSPT / NPT as per gauge size.

BLOW OUT PROOF STEM

Flowjet Valves is providing maximum safety with bottom entry Stem. Internal pressure works to help make the seal rather than break it as in a top entry Stem Design. The design ensures that Stem blow out does not take place. Safeguarding personnel working in it's vicinity. Opposed Belleville washers act as a spring to Compensate for wear & tear expansion and contraction.



SPECIAL FEATURES

Flowjet Valves are provided with three interlaced PTFE rings clubbed together, triple locking PTFE rings to make zero leak from gland. This act as a cushion and suppresses pressure and helps in zero leak performance from gland.

MATERIAL SPECIFICATION

NO.	PARTS NAME	QTY.	MATERIALS		
1	BODY	1	ASTM A 351 CF8	ASTM A	ASTM A
2	BODY CAP	1		351 CF8M	216 WCB
3	BODY SEAL	2	VIRGIN PTFE		
4	CAP SEAL	1	PTFE		
5	BALL	1	AISI 304	AISI 316	S.S. 304
6	STEM	1			
7	STEM SEAL	1	VIRGIN PTFE		
8	GLAND	1	AISI 304	AISI 316	AISI 410
9	GLAND PACKING	3	VIRGIN PTFE		
10	GLAND NUT	1	S.S. 304	S.S. 304	M.S
11	LEVER	1	S.S. 304	S.S. 304	M. S.
12	LEVER NUT	1	S.S. 304	S.S. 304	M. S.
13	LEVER SLEEVE	1	SPECIAL PVC		

TEST PRESSURE

TEST	MEDIUM	PRESSURE
SEAT	HYDRAULIC	22 KG / CM ²
SEAT	AIR	5.5 TO 7.0 KG / CM ²
BODY	HYDRAULIC	30 KG / CM ²

- GLASS PTFE, CARBON PTFE, BRONZE PTFE AVAILABLE ON REQUEST.

MATERIALS CHEMICAL COMPOSITION

MATERIALS	C	MN	SI	CR	MO	P	S	NI
ASTM A 351 CF8	Max.0.08	Max.1.50	Max. 2.00	18.0 to 21.0	Max.0.50	Max. 0.04	Max. 0.04	8.00 to 11.0
ASTM A 351 CF8 M	Max.0.03	Max.1.50	Max.1.50	18.0 to 21.0	2.0 to 3.0	Max. 0.04	Max. 0.04	9.00 to 12.0
ASTM A 216 WCB	Max.0.30	Max.1.00	Max. 0.60	Max.0.4	Max. 0.25	Max. 0.04	Max. 0.045	Max. 0.5

AS WE CONTINUOUSLY ENDEAVOUR TO IMPROVE OUR PRODUCTS, THE DATA, DIMENSIONS, SPECIFICATIONS & DRAWINGS GIVEN HEREIN ARE SUBJECT TO CHANGE.

Manufactured By :

Flowjet VALVES PVT. LTD.

Dealer :-

TUBES & VALVES MFG CO , Chennai

Email :- sales@tubesandvalves.com

Ph:- 80120 1166

Flowjet®

CAST GLOBE VALVE

Full Flow body to API 6D

Cast steel with uniform wall thickness, smooth flowing contours and generous radius fillet to prevent stress concentration. Designed for structural stability, mechanical strength & safe weldability.

One Piece Design Bonnet

Cast steel O.S. & Y type. The one piece design aligns stem accurately eliminating excessive weight and unnecessary Working parts. All bonnets are equipped with a stainless steel bushing which serves as a guide for stem and provides backseating when valve is wide open under pressure.

Stem

Heat treated 13% cr. stainless steel, with precision Acme thread, Self adjusting radial backseating shoulder engages with the backseat in the bonnet. Ground mirrorlike finish assures long life of packing which drastically reduces friction & no leakage.

Stuffing box

In all valves the Stuffing box is deep, has high quality finish & holds high pressure/ Temperature Packing ring ensuring leak tightness and long packing life.



6D-0918



6D-0918

ISO 9001-2008
IBR Approved
Fire Safe Appr.

Flowjet® Industrial Valves “Built To Perfection”

CAST GLOBE VALVE

**O.S. & Y Bolted Bonnet,
Flanged end**

Size Range :

ASA 150# 25mm to 400 mm

ASA 300# 25mm to 250 mm

ASA 600# 25mm to 200 mm

MATERIAL OF SPECIFICATION

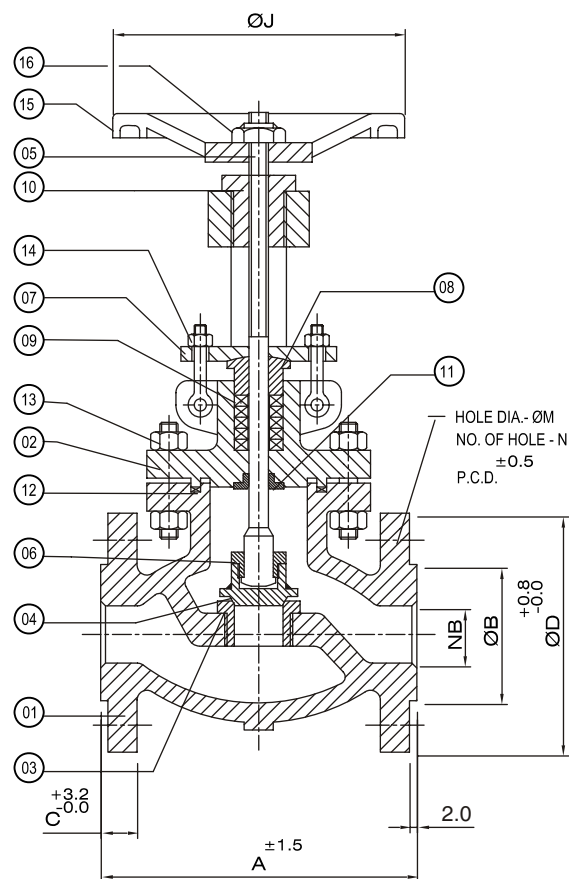
Sr.	MATERIAL	WCB	CF8	CF8M
1	Body	ASTMA216 GR WCB	ASTMA351	ASTMA351
2	Bonnet	WCB	S.S.304	S.S.316
3	Seat	S.S. 410/ C.S. +13% Cr.	S.S.304	S.S.316
4	Disc	S.S. 410/ C.S. +13% Cr.	S.S.304	S.S.316
5	Stem	S.S.410	S.S.304	S.S.316
6	Stem Nut	S.S.410	S.S.304	S.S.316
7	Gland Flange	ASTMA216 GR. WCB	S.S.304	S.S.316
8	Gland Bush	S.S.410	S.S.304	S.S.316
9	Gland Packing	100% Graphite	PTFE	
10	Yoke Nut	C.S. / S.G. Iron	S.G. Iron	
11	Back Seat	S.S.410	S.S. 304	
12	Gasket	Spiral Wound+Graphite Fill	S.S. 304 Spiral Wound + PTFE	
13	Stud & Nut	ASTMA 193 GR B7 / 2H	ASTMA 194 B8 / 8	
14	Eye Bolt & Nut	C.S. High Tensile	S.S.304	
15	Hand wheel	C.S./M.S. Fabricated	C.S./M.S. Fabricated	
16	Hand Wheel Nut	C.S.	S.S.304	

DIMENSIONS (IN MM)

150#						
Size	A	ØB	C	ØD	N	PCD
15	108	35	10.0	90	4	60.3
20	118	43	10.9	100	4	69.8
25	127	51	11.6	110	4	79.3
40	165	73	14.7	125	4	98.4
50	203	92	16.3	150	4	120.6
65	216	105	17.9	180	4	139.7
80	241	127	19.5	190	4	152.4
100	292	157	24.3	230	8	190.5
125	356	186	24.3	255	8	215.9
150	406	216	25.9	280	8	241.3
200	495	270	29.0	345	8	298.5
250	622	324	30.6	405	12	361.9
300	699	381	32.2	485	12	431.8
350	787	413	35.4	535	12	476.2
400	914	470	37.0	595	16	539.7

DESIGN FEATURES

- ❖ Mfg. Std. API 6D / BS 1873
- ❖ Face to face As per ANSI B-16.10
- ❖ Testing As per BS 5146 / API 598



TEST PRESSURE

Test	Pressure	150#	300#
Hydro Body	PSIG	425	1100
	Kg/cm²	31	77
Hydro Seat	PSIG	326	800
	Kg/cm²	23	56
Backseat PR	PSIG	326	800
	Kg/cm²	23	56
Air Test Seat	PSIG	100	100
	Kg/cm²	7	7

AS WE CONTINUOUSLY ENDEAVOUR TO IMPROVE OUR PRODUCTS, THE DATA, DIMENSIONS, SPECIFICATIONS & DRAWINGS GIVEN HEREIN ARE SUBJECT TO CHANGE.

Manufactured By :

Flowjet VALVES PVT. LTD.

Dealer :-

TUBES & VALVES MFG CO , Chennai

Email :- sales@tubesandvalves.com

Ph:- 80120 1166

Flowjet®

CAST GATE VALVE



Full Flow body to API 600

Cast steel with uniform wall thickness, smooth flowing contours and generous radius fillet to prevent stress concentration. Designed for structural stability, mechanical strength & safe weldability.

One Piece Design Bonnet

Cast steel O.S. & Y type. The one piece design aligns stem accurately eliminating excessive weight and unnecessary Working parts. All bonnets are equipped with a stainless steel bushing which serves as a guide for stem and provides backseating when valve is wide open under pressure.

Stem

Heat treated 13% Cr. Stainless steel, with precision Acme thread, A heavy Tee head holds Wedge at full contact for uniform pull of the wedge in operation. Self adjusting radial backseating shoulder engages with the backseat in bonnet. Ground mirrorlike finish assures long life of packing which drastically reduces friction and no leakage.

Stuffing Box

In all valves the stuffing box is deep, has high quality finish and holds high pressure / Temperature packing rings ensuring tightness and long packing life.



6D-0918



6D-0918

ISO 9001-2008
IBR Approved
Fire Safe Appr.

Flowjet® Industrial Valves “Built To Perfection”

CAST GATE VALVE O.S. & Y Bolted Bonnet, Flanged end

Size Range :

ASA 150# 15mm to 800 mm

ASA 300# 40mm to 300 mm

ASA 600# 40mm to 200 mm

DESIGN FEATURES

- ❖ Mfg Std. API 600 / BS 1414 / ANSI B 16.34
- ❖ Face to Face As per ANSI B 16.10
- ❖ Ends Flanged & Drilled as per ANSI B-16.5 R.F.
- ❖ Tested as per BS 5146 / API 598

MATERIAL OF SPECIFICATION

Sr. No.	Material of Construction	Carbon Steel	Stainless Steel	
			CF8	CF8M
1	Body	ASTMA216Gr. WCB	ASTMA351 Gr. CF8	CF8M
2	Bonnet	WCB	CF8	CF8M
3	Wedge	ASTM A 216 Gr. WCB With 13% Cr. facing	CF8	CF8M
4	Seat Ring	Carbon Steel With 13% Cr. Facing	CF8	CF8M
5	Gasket	Spiral Wound + Graphite	Spiral Wound + PTFE	
6	Bonnet Stud & Nut	ASTM A 193 B7 / 194 Gr. 2H	SS 304	SS 316
7	Bonnet Bush	SS 410	SS 304	SS 316
8	Spindle	SS 410	SS 304	SS 316
9	Gland Packing	100 % Graphite	PTFE	
10	Gland	SS 410	SS 304	SS 316
11	Gland Flange	Carbon Steel	SS 304	SS 316
12	Yoke Sleeve	Ni Resist / Cast Iron	Ni Resist	
13	Yoke Bush	Carbon Steel	SS 304	SS 316
14	Hand Wheel	Malleable / Cast Iron		

Also available in hard face with Stellate Seat Ring & Wedge.

DIMENSIONS (IN MM)

NB	A	D	E	F	H	K	M
40	165	125	14.7	73	4	16.0	98.4
50	178	150	16.3	92	4	19.0	120.6
65	191	180	17.9	105	4	19.0	139.7
80	203	190	19.5	127	4	19.0	152.4
100	229	230	24.3	157	8	19.0	190.5
150	267	280	25.9	216	8	22.0	241.3
200	292	345	29.0	270	8	22.0	298.5
250	330	405	30.6	324	12	25.0	361.9
300	355	485	32.2	381	12	25.0	431.8
350	381	535	35.4	413	12	28.5	476.2
400	406	595	37.0	470	16	28.5	539.7

AS WE CONTINUOUSLY ENDEAVOUR TO IMPROVE OUR PRODUCTS, THE DATA, DIMENSIONS, SPECIFICATIONS & DRAWINGS GIVEN HEREIN ARE SUBJECT TO CHANGE.

Manufactured By :

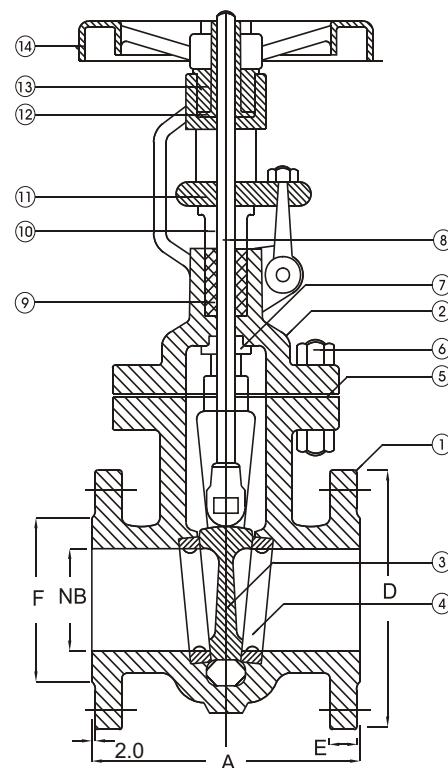
Flowjet VALVES PVT. LTD.

Dealer :-

TUBES & VALVES MFG CO , Chennai

Email :- sales@tubesandvalves.com

Ph:- 80120 1166



'H' NOS 'K' Ø HOLES ON 'M' P.C.D.
DRILLED OFF CENTRE EQUISPACED

TEST PRESSURE

Test	Pressure	150 Class	300 Class	Testing Medium
Body	PSIG	450	1125	Water
	Kg/cm ²	30	77	
Seat & Backseat	PSIG	325	825	
	Kg/cm ²	22	57	
Seat leak	PSIG	60 to 100		Air
	Kg/cm ²	4 to 6		

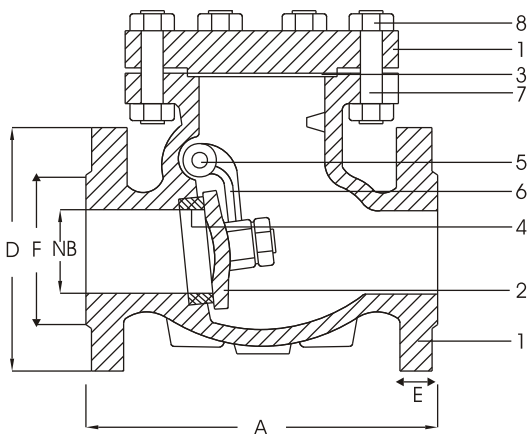
Flowjet®

CAST STEEL CHECK VALVE

- Body & Cover precision machined Castings. Exclusive Hinge pin does not penetrate body.
- Body & Cover joint male-female type bolted cover.
- Free floating disc design is enabling rotation to avoid localised wear.
- Leakproof fully encased body cover joint gasket.

MATERIALS OF SPECIFICATION

Sr.	Part Name	Carbon Steel	Alloy Steel	Stainless Steel	
				CF8	CF8M
1.	Body/Cover	WCB	WC6	CF8	CF8M
2.	Disc	CA 15 or WCB + 13%Cr	CA 15 or WC6 + 13% Cr	CF8	CF8M
3.	Gasket	Spiral Wound Metallic	Spiral Wound Metallic	Spiral Wound Metallic/PTFE	
4.	Seat	CS + 13%Cr	WC6 + 13%Cr	CF8	CF8M
5.	Pin	410(H)	410(H)	304	316
6.	Disc Carrier	WCB	WC6	CF8	CF8M
7.	Bolt	A 193-B7	A 193-B16	A 193-B8	A193-B8M
8.	Nuts	A 193-2H	A- 194-4	A-194-8	A194-8M



'H' NOS 'K'
Ø HOLES ON
'M' P.C.D.
DRILLED OFF
CENTRE
EQUISPACED

R.F. Height 2.0



DIMENSIONS (IN MM)

NB	ASA 150 CLASS							ASA 300 CLASS						
	A	D	E	F	H	K	M	A	D	E	F	H	K	M
40	165	125	14.7	73	4	16	98	229	155	21.1	73	4	22	114
50	203	150	16.3	92	4	19	121	267	165	22.7	92	8	19	127
65	216	180	17.9	105	4	19	140	292	190	25.9	105	8	22	149
80	241	190	19.5	127	4	19	152	318	210	29.0	127	8	22	168
100	292	230	24.3	157	8	22	190	356	255	32.2	157	8	22	200
150	406	280	25.9	216	8	22	241	444	320	37.0	216	12	22	270
200	495	345	29.0	270	8	25	298	559	380	41.7	270	12	25	380
250	622	405	30.6	324	12	25	362	622	445	48.1	324	16	28	387
300	698	485	32.2	381	12	28	432	711	520	51.3	381	16	32	451

TEST PRESSURES

Test	Pres-sures	150 Class	300 Class	600 Class	Testing Medium
Body	PSIG	450	1125	2225	Water
	BAR	30	77	157	
Seat Leak	PSIG	325	825	1650	Air
	BAR	22	57	115	

Also available in Stellate Seat Face.



6D-0918



6D-0918

ISO 9001-2008
IBR Approved
Fire Safe Appr.

Flowjet® Industrial Valves "Built To Perfection"

Flowjet®

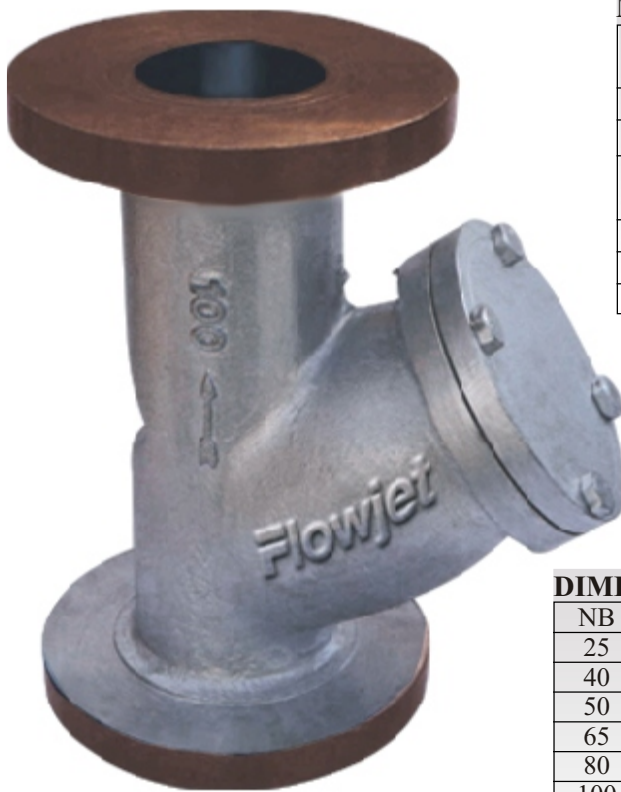
CAST STEEL “Y” TYPE STRAINER

Body & cover joint male-female bolted cover.
Leakproof fully encased Body-cover joint Gasket.

MATERIAL OF SPECIFICATION

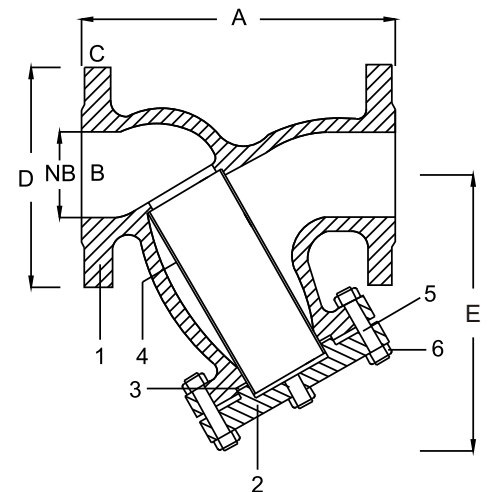
Sr.	Part Name	Carbon steel	Alloy Steel	Stainless Steel	
				CF8	CF8M
1	Body	WCB	WC6	CF8	CF8M
2	Cover	WCB	WC6	CF8	CF8M
3	Gasket	Spiral Wound Metallic	Spiral Wound Metallic	Spiral Wound Metallic/PTFE	Spiral Wound Metallic/PTFE
4	Mesh	SS 304 40 Mesh	SS 304 40 Mesh	SS 304 40 Mesh	SS 304 40 Mesh
5	Bolt	A 193-B7	A193-B16	A193-B8	A 193-B8M
6	Nuts	A194-2H	A 194-4	A 194-8	A 194-8M

Mesh can be supplied as per your requirement also.



DIMENSIONS (IN MM)

NB	A	B	C	D	E
25	160	25	11.6	110	110
40	200	38	14.7	125	110
50	230	50	16.3	150	135
65	290	63	17.9	180	140
80	310	75	19.5	190	170
100	350	100	24.3	230	215
125	400	125	24.3	255	245
150	480	150	25.9	280	270
200	600	200	29.0	345	330
250	730	250	30.6	405	415
300	850	300	32.2	485	425



AS WE CONTINUOUSLY ENDEAVOUR TO IMPROVE OUR PRODUCTS, THE DATA, DIMENSIONS, SPECIFICATIONS & DRAWINGS GIVEN HEREIN ARE SUBJECT TO CHANGE.

Manufactured By :

Flowjet VALVES PVT. LTD.

Dealer :-

TUBES & VALVES MFG CO , Chennai

Email :- sales@tubesandvalves.com

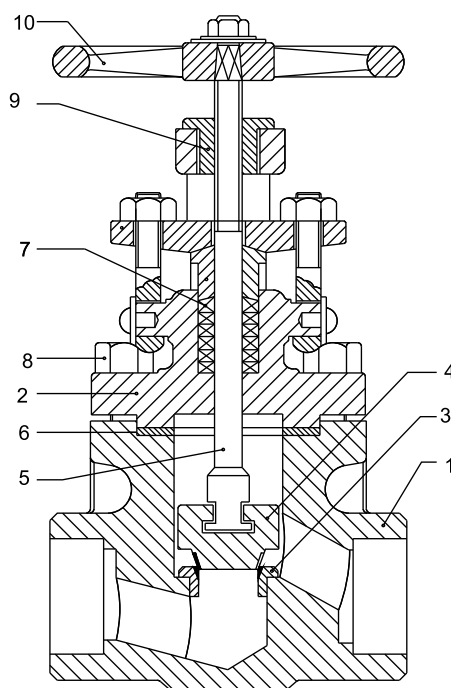
Ph:- 80120 1166

Flowjet®

FORGED STEEL GLOBE, GATE & LIFT CHECK VALVE



Bolted Bonnet out side screw and yoke Construction. Stem of 13% cr steel, heat treated and fine finish. Body Bonnet Gasket is fully encapsulated.



MATERIAL OF SPECIFICATION

No.	Part Name	Part's Sr.No.	Standard Material
1.	Body / Bonnet	1,2	Forged Steel A 105
2.	Seat Ring / Plug / Wedge / Spindle	3,4,5	AISI 410
3.	Gasket	6	Spiral Wound
4.	Gland Packing	7	100% Graphite
5.	Head Bolts & Nuts	8	A193 B7 / 2H
6.	Yoke Nut / Sleeve	9	Ni Resist
7.	Hand Wheel	10	C.S / Malleable Iron

Mfg. Standard: API 602 • Testing Standard: API 598

TEST PRESSURES

Class	Test	Medium	Pressure	
			PSI	BAR
800	Body	Water	3000	107
	Seat Leak	Air	57-86	4-6
	Back Seat	Water	1100	152
1500	Body	Water	5625	388
	Seat Leak	Air	57-86	4-6
	Back Seat	Water	4125	285



6D-0918



6D-0918

ISO 9001-2008

IBR Approved

Fire Safe Appr.

Flowjet® Industrial Valves “Built To Perfection”

Flowjet[®]

BUTTERFLY VALVE



Longer Torque

Flowjet unique seat sealing design offer no frictional contact between valve, disc & seat.

Zero Friction Reduces the Operating Torque.

Longer Service Life

When the disc Contacts the tapered projection of the rubber seat, a complete seat is attained, which results in longer service life.

Triple seat against the external leakage

The first seal is applied cross the surface of disc and seat ring, second seats is of seat ring and stem.

Greater sealing capacity

When the disc is pressed against the projection on the valve seat, the fully closed position becomes 90°+ to attain a more & complete seal.

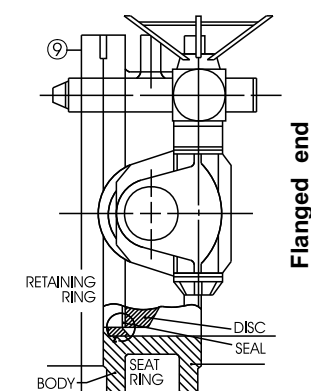
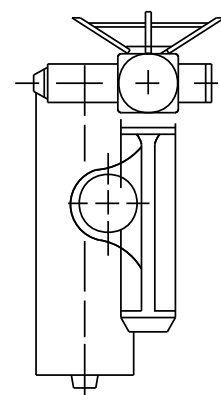
Size range : 50mm to 900mm

PRESSURE RATING

Seat	Rating (BAR)	Test Pressure (BAR)	
		Body/Disk	Seat
Black Nitrile	16	24	17.6
Epdm	14	21	15.4

Mfg. Standard: API 609 • Testing Standard: API 598

Butterfly Valves can be supplied with factory fitted pneumatics, hydraulic or electrical actuators etc.



AS WE CONTINUOUSLY ENDEAVOUR TO IMPROVE OUR PRODUCTS, THE DATA, DIMENSIONS, SPECIFICATIONS & DRAWINGS GIVEN HEREIN ARE SUBJECT TO CHANGE.

Manufactured By :

Flowjet VALVES PVT. LTD.

Dealer :-

TUBES & VALVES MFG CO , Chennai

Email :- sales@tubesandvalves.com

Ph:- 80120 1166

Flowjet®

INDUSTRIAL VALVES

Flowjet is a leading brand in Industrial Valves with a strong presence in india and overseas.

Flowjet Manufacturing unit is entirely equipped with the precision machineries and most modern manufacturing methods are employed to get the best quality products. Our all the products pass through the sequence of quality check right from raw materials to finish products by qualified & experiences Engineers.

Our works are approved by **American Petroleum Institute** Standards **6D, 600, 602, 609, IBR, FIRE SAFE** Ball Valves as per API 607. Moreover our valves have been regularly approved by many independent Agencies. Our Organization is **ISO 9001-2008 Certified Co.**

Flowjet Valves caters the products in the various sectors like Chemical, Petroleum & Oil Refineries, Fertilizers, Rubber, Sugar, Paper, Paint, Pharmaceuticals, Distilleries, Gas Line,EPC contractors and many more.

A wide network & strong existence ensure the availability of Flowjet Valves anywhere in India.

Our Other Products

- | | |
|---|--|
| <input type="checkbox"/> Forged Steel Valves | <input type="checkbox"/> Pinch Valves |
| <input type="checkbox"/> Butterfly Valves | <input type="checkbox"/> Jacketed Valves |
| <input type="checkbox"/> Gate Valves | <input type="checkbox"/> 3 Way Valves |
| <input type="checkbox"/> Plug Valves | <input type="checkbox"/> Port Type Strainers |
| <input type="checkbox"/> Flush Bottom Ball Valves | <input type="checkbox"/> Non - Return Valves |
| <input type="checkbox"/> Safety Valves | <input type="checkbox"/> Dual Plate NRV |



Fire Safe Approved
as per API 607



Manufactured By :

Flowjet VALVES PVT. LTD.

Dealer :- TUBES & VALVES MFG CO , Chennai

Email :- sales@tubesandvalves.com

Ph:- 80120 1166

Our Network :

- Ankleshwar ● Bangalore ● Baroda ● Chandigadh ● Chennai ● Coimbatore
- Delhi ● Indore ● Hyderabad ● Jaipur ● Jallandhar ● Kanpur ● Kolkatta ● Kota
- Ludhiana ● Madurai ● Mumbai ● Nashik ● Pune ● Raipur ● Vapi

