

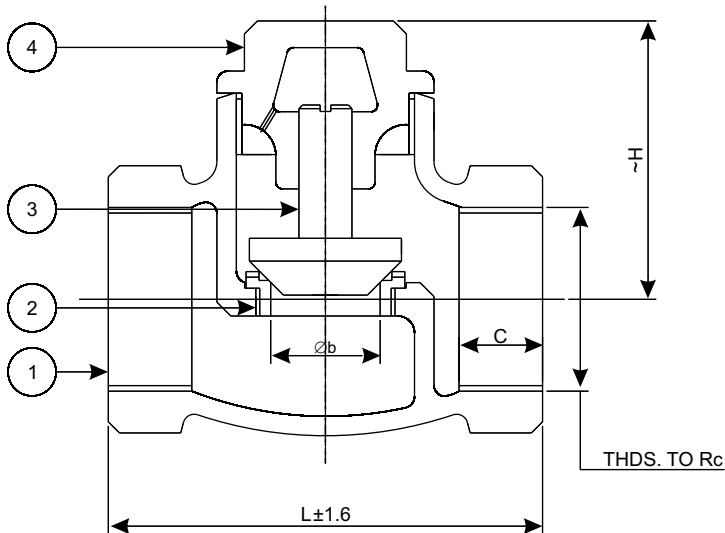
BRONZE HORIZONTAL LIFE CHECK VALVES

SPECIFICATIONS

SCREWED IN COVER, RENEWABLE SEAT & DISC, SCREWED FEMALE BSP TAPER THREADS TO BS21. OTHER FORMS OF THREADS CAN BE PROVIDED ON REQUEST.

CERTIFICATE

ITEMS CAN BE SUPPLIED WITH CERTIFICATE OF MANUFACTURE AND TEST ON FORM III-C AS PER REGULATION 269 OF IBR.



STANDARD MATERIAL COMBINATION

P.NO.	QTY.	DESCRIPTION	MATERIALS	SPECIFICATIONS
1	1	BODY	BRONZE	IBR CLAUSE 282 (a) (iv) Gr. B
2	1	BODY SEAT RING	13% Cr. STEEL (HB 250 Min.)	ASTM A182 Gr. F6a or its Eq.
3	1	DISC	13% Cr. STEEL (HB 300 Min.)	ASTM A182 Gr. F6a or its Eq.
4	1	COVER	BRONZE	IBR CLAUSE 282 (a) (iv) Gr.

DIMENSIONAL DATA

NPS	1/2	3/4	1	1 1/4	1 1/2	2
L	83	95	111	133	150	178
H	55	55	59	65	82	93
Øb	12	19	24	32	36.5	50
C	12	13.5	17	18.5	22.5	23
Rc	1/2	3/4	1	1 1/4	1 1/2	2
Aprox. Wt. ^						
ITEM CODE NOS	BM 033 D	BM 033 F	BM 033 G	BM 033 H	BM 033 I	BM 033 J

END DETAILS	MAXIMUM WORKING PRESSURES	TEST PRESSURES			
		SHELL TEST (HYDROSTATIC)	SEAT TEST		CODE
			(HYDROSTATIC)	(STEAM)	
THREADED AS PER BS 2 1	250 psig (17.24 bar) AT 435°F (225°C)	500 psig	500 psig	250 psig	INDIAN BOILER REGULATION

NOTE: The above data is subject to change without notice due to our continuing product improvement program. (^WEIGHT GIVEN IN KGS)



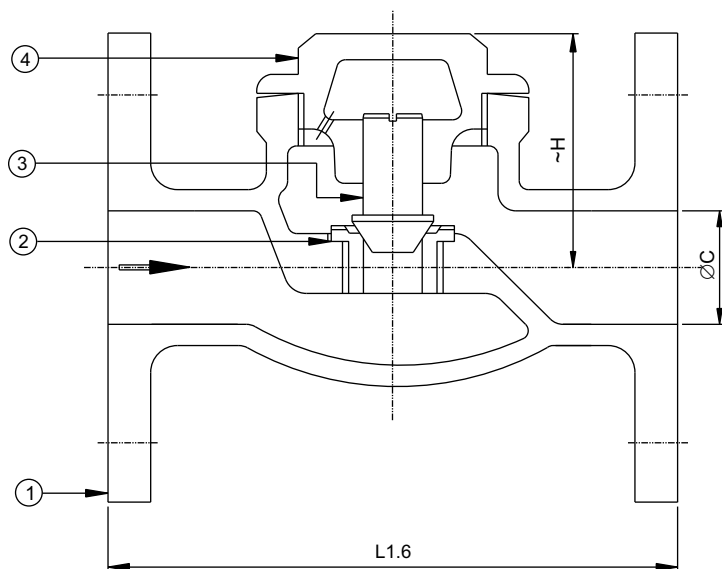
BRONZE HORIZONTAL LIFE CHECK VALVES

SPECIFICATIONS

SCREWED IN COVER, RENEWABLE SEAT & DISC, FLANGED ENDS AS PER BS 10 TABLE H.

CERTIFICATE

ITEMS CAN BE SUPPLIED WITH CERTIFICATE OF MANUFACTURE AND TEST ON FORM III-C AS PER REGULATION 269 OF IBR.



BM034



STANDARD MATERIAL COMBINATION

P.NO.	QTY.	DESCRIPTION	MATERIALS	SPECIFICATIONS
1	1	BODY	BRONZE	IBR CLAUSE 282 (a) (iv) Gr. B
2	1	BODY SEAT RING	13% Cr. STEEL (HB 250 Min.)	ASTM A182 Gr. F6a or its Eq.
3	1	DISC	13% Cr. STEEL (HB 300 Min.)	ASTM A182 Gr. F6a or its Eq.
4	1	COVER	BRONZE	IBR CLAUSE 282 (a) (iv) Gr.

DIMENSIONAL DATA

DN NPS	15 ½	20 ¾	25 1	32 1- 1/4	40 1 ½	50 2
L	101.5	114.5	127	139.5	153	178.5
Øc	12.7	20	25	32	40	50
H	55	55	59	65	82	93
Aprox. Wt. ⤴						
ITEM CODE NOS	BM 034 D	BM 034 F	BM 034 G	BM 034 H	BM 034 I	BM 034 J

END DETAILS	MAXIMUM WORKING PRESSURES	TEST PRESSURES			
		SHELL TEST (HYDROSTATIC)	SEAT TEST		CODE
			(HYDROSTATIC)	(STEAM)	
	250 psig (17.24 bar) AT 435°F (225°C)	500 psig	500 psig	250 psig	INDIAN BOILER REGULATION

NOTE: The above data is subject to change without notice due to our continuing product improvement program. (⤴WEIGHT GIVEN IN KGS)