

BRONZE PARALLEL SLIDE BLOW OFF VALVES

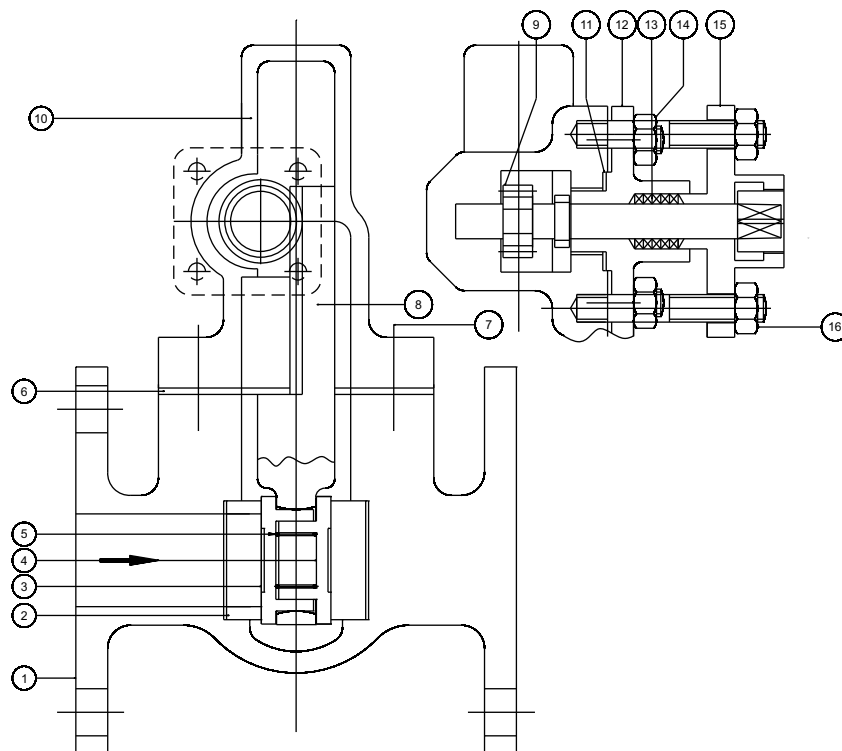


FIG NO. BM067/ BM068

STANDARD MATERIAL COMBINATION

P.NO.	QTY.	DESCRIPTION	MATERIAL	SPECIFICATION
1	1	BODY	BRONZE	IBR CLAUSE 282 (a) iv) Gr.B
2	2	BODY SEAT RING	SS	ASTM A276 SS 410+ HARD FACING
3	1	MALE DISC	SS	ASTM A276 SS 410+ HARD FACING
4	1	FEMALE DISC	SS	ASTM A276 SS 410+ HARD FACING
5	1	SPRING	CARBON STEEL	IBR CLAUSE 307 TO 314
6	1	GASKET	C.A.F	IS 2712
7	TO SUIT	STUDS & NUTS	CARBON STEEL	BS 916
8	1	RACK	BRONZE	IBR CLAUSE 282 (a) (iv) Gr. B
9	1	PINION	BRONZE	IBR CLAUSE 282 (a) (iv) Gr. B
10	1	BONNET	BRONZE	IBR CLAUSE 282 (a) (iv) Gr. B
11	1	GASKET	C.A.F	IS 2712
12	1	STUFFINF BOX	BRONZE	IBR CLAUSE 282 (a) (iv) Gr. B
13	-	PACKING	GRAPHITED ASBETOS	-----
14	2 EACH	STUDS & NUTS	CARBON STEEL	BS 916
15	1	GLAND	BRONZE	IBR CLAUSE 282 (a) (iv) Gr. B
16	4 EACH	STUDS & NUTS	CARBON STEEL	BS 916

NOTE: The above data is subject to change without notice due to our continuing product improvement program.

BRONZE LINK TYPE PARALLEL SLIDE BLOW OFF VALVES

SPECIFICATIONS

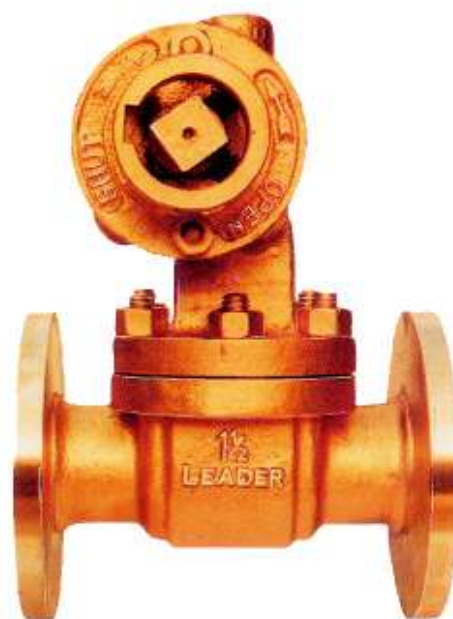
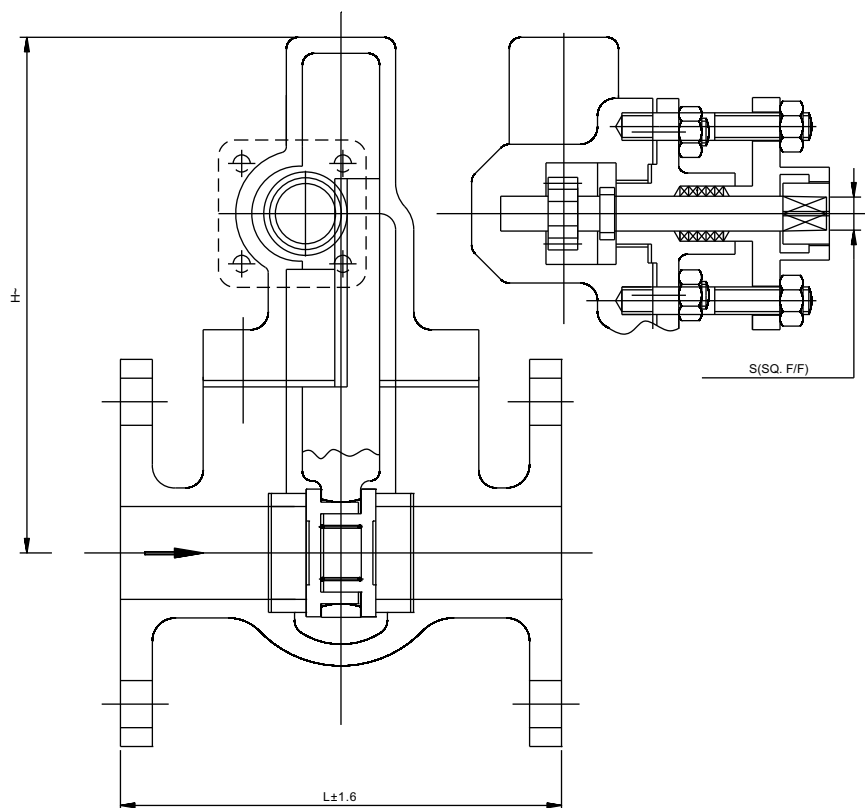
PARALLEL SLIDE, RACK AND PINION OPERATED
RENEWABLE SEAT & DISC FLANGED ENDS.

CERTIFICATE

ITEMS CAN BE SUPPLIED WITH CERTIFICATE OF
MANUFACTURE AND TEST ON FORM III-C AS PER
REGULATION 269 OF IBR.

SALIENT FEATURES

- (1) OPERATION BY MEANS OF A RACK & PINION IS SO ARRANGES AS TO GIVE FULL OPENING WITH A HALF TURN OF THE BOX KEY.
- (2) THE GLAND FORMS A LOCKING GUARD WHICH PREVENTS THE REMOVAL OF BOX KEY UNLESS THE VALVE IS CLOSED



CATALOGUE FIG NO.

ITEM	FIG NO.	END DETAILS
BRONZE PARALLEL SLIDE BLOW OFF VLAVE MAX. BOP 250 PSIG (17.24 bar)	BM 068	FLANGED ENDS TO BS 10 TABLE H

DIMENSIONAL DATA

DN NPS	20 3/4	25 1	32 1 1/4	40 1 ½	50 2	65 2 ½	80 3
L	165	165	184	162	175	184	238
H	140	140	158	178	210	242	325
S	16	16	17.5	19	22	25.4	32
Aprox. Wt. ▲							
ITEM CODE NOS.	BM068 F	BM068 G	BM068 H	BM068 I	BM068 J	BM068 K	BM068 L
ITEM CODE NOS.	MAX WORKING PRESSURES		TEST PRESSURES				
			SHELL TEST (HYDROSTATIC)	SEAT TEST		CODE	
				(HYDROSTATIC)	(STEAM)		
BM 068	250 psig (17.24 bar) AT 4350F (225°C)		500 psig	500 psig	250 psig	REGULATION	

NOTE: The above data is subject to change without notice due to our continuing product improvement program. (^WEIGHT GIVEN IN KGS)