

 **LEADER<sup>®</sup> LVL<sup>®</sup>**  
LEADER VALVES LTD.

**FORGED  
PIPE  
FITTINGS**



 **LEADER VALVES LTD.**

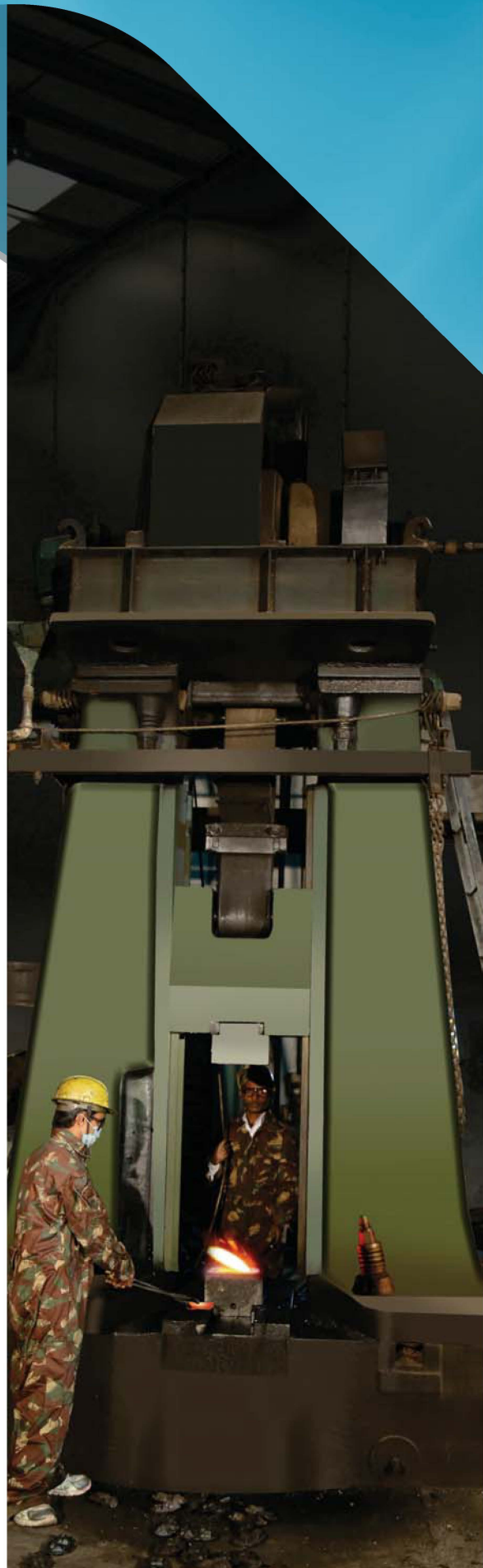
[www.leadervalves.com](http://www.leadervalves.com)

Leader High Pressure Fittings (India) Pvt. Ltd. is a manufacturing unit of M/s. Leader Valves Ltd. for manufacturing of forged fittings & valves forgings. It is equipped with friction drop forging hammers, power presses and furnaces. The machine shops are equipped with special purpose machines (SPM) for precise machining.

Our product range includes forged fittings 90 Deg. Elbows, 45 Deg. Elbows, Tees, Full Couplings, Half Couplings, CAP, Unions, Swages, Plugs & Bushing as per ASME B16.11 and BS 3799, as well as forgings for steel valves.

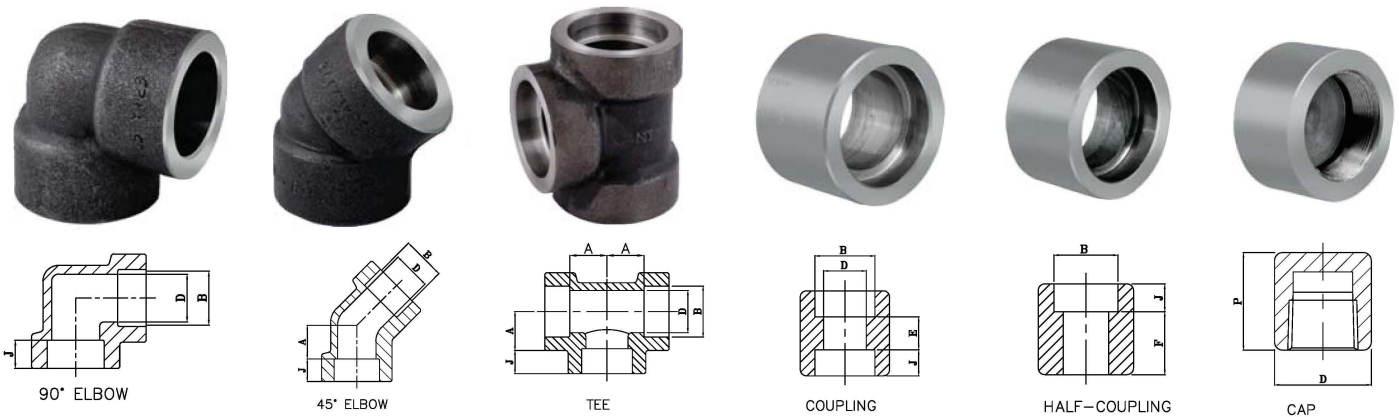
Forging can be supplied in Carbon Steel (conforming to ASTM A105), Stainless Steel, Alloy Steel and Duplex Steel (Confirming to ASTM A182).

We maintain a strict control on quality right from the raw material stage to the final stage of packaging & shipment. All laid down chemical, mechanical & dimensional parameters are checked by our trained staff & the relevant test reports are furnished on demand. Third party & IBR inspections are also acceptable.



## FORGED SOCKET WELDING FITTINGS

Product	Elbow 90 Deg.	Elbow 45 Deg.	Tee	Full Coupling	Half Coupling	Round Cap
Product Standard	ASME B16.11	ASME B16.11	ASME B16.11	ASME B16.11	ASME B16.11	ASME B16.11
Material	A105, LF2, F5, F9, F11, F22, F304, F304L, F316, F316L, F321	A105, LF2, F5, F9, F11, F22, F304, F304L, F316, F316L, F321	A105, LF2, F5, F9, F11, F22, F304, F304L, F316, F316L, F321	A105, LF2, F5, F9, F11, F22, F304, F304L, F316, F316L, F321	A105, LF2, F5, F9, F11, F22, F304, F304L, F316, F316L, F321	A105, LF2, F5, F9, F11, F22, F304, F304L, F316, F316L, F321
End Detail	Socket Weld to ASME B16.11	Socket Weld to ASME B16.11	Socket Weld to ASME B16.11	Socket Weld to ASME B16.11	Socket Weld to ASME B16.11	Socket Weld to ASME B16.11



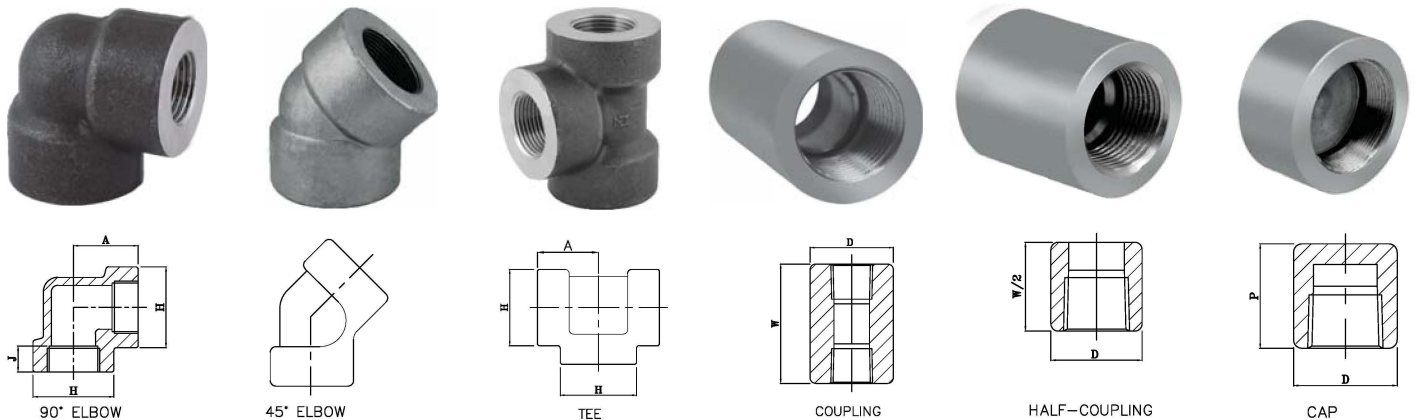
DN		SOCKET BORE DIA.'B'	BORE DIAMETER OF FITTINGS			DEPTH OF SOCKET 'J' MIN	CENTER TO BOTTOM OF SOCKET - 'A'						LAYING LENGTH	
			CLASS DESIGNATION				90° ELBOW, TEE AND CROSSES			45° ELBOW			COUPLING	HALF COUPLING
			3000	6000	9000		3000	6000	9000	3000	6000	9000	E	F
6	1/8	11.2 10.8	7.6 6.1	4.8 3.2	- -	9.5	11.0	11.0	-	8.0	8.0	-	6.5	16.0
8	1/4	14.6 14.2	10.0 8.5	7.1 5.6	- -	9.5	11.0	13.5	-	8.0	8.0	-	6.5	16.0
10	3/8	18.0 17.6	13.3 11.8	9.9 8.4	- -	9.5	13.5	15.5	-	8.0	11.0	-	6.5	17.5
15	1/2	22.2 21.8	16.6 15.0	12.5 11.0	7.2 5.6	9.5	15.5	19.0	25.5	11.0	12.5	15.5	9.5	22.5
20	3/4	27.6 27.2	21.7 20.2	16.3 14.8	11.8 10.3	12.5	19.0	22.5	28.5	13.0	14.0	19.0	9.5	24.0
25	1	34.3 33.9	27.4 25.9	21.5 19.9	16.4 14.4	12.5	22.5	27.0	32.0	14.0	17.5	20.5	12.5	28.5
32	1-1/4	43.1 42.7	35.8 34.3	30.2 28.7	23.5 22.0	12.5	27.0	32.0	35.0	17.5	20.5	22.5	12.5	30.0
40	1-1/2	49.2 48.8	41.6 40.1	34.7 33.2	28.7 27.2	12.5	32.0	38.0	38.0	20.5	25.5	25.5	12.5	32.0
50	2	61.7 61.2	53.3 51.7	43.6 42.1	38.9 37.4	16.0	38.0	41.0	54.0	25.5	28.5	28.5	19.0	41.0
65	2-1/2	74.4 73.9	64.2 61.2	- -	- -	16.0	41.0	-	-	28.5	-	-	19.0	43.0

Upper & lower Values for each size are the resp. max. & min. dimensions



## FORGED THREADED FITTINGS

Product	Elbow 90 Deg.	Elbow 45 Deg.	Tee	Full Coupling	Half Coupling	Round Cap
Product Standard	ASME B16.11	ASME B16.11	ASME B16.11	ASME B16.11	ASME B16.11	ASME B16.11
Material	A105, LF2, F5, F9, F11, F22, F304, F304L, F316, F316L, F321	A105, LF2, F5, F9, F11, F22, F304, F304L, F316, F316L, F321	A105, LF2, F5, F9, F11, F22, F304, F304L, F316, F316L, F321	A105, LF2, F5, F9, F11, F22, F304, F304L, F316, F316L, F321	A105, LF2, F5, F9, F11, F22, F304, F304L, F316, F316L, F321	A105, LF2, F5, F9, F11, F22, F304, F304L, F316, F316L, F321
End Detail	Screwed Female NPT Threads to ANSI/ASME B1.20.1	Screwed Female NPT Threads to ANSI/ASME B1.20.1	Screwed Female NPT Threads to ANSI/ASME B1.20.1	Screwed Female NPT Threads to ANSI/ASME B1.20.1	Screwed Female NPT Threads to ANSI/ASME B1.20.1	Screwed Female NPT Threads to ANSI/ASME B1.20.1

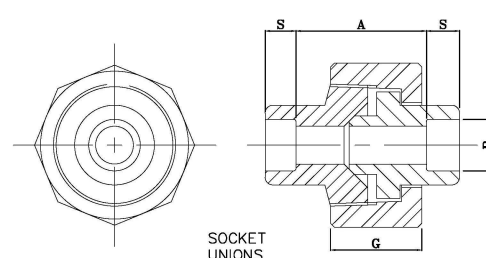
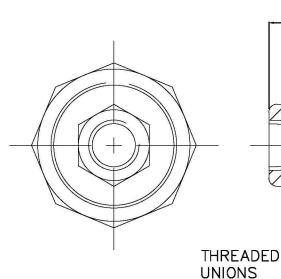


DN	NOM. PIPE SIZE	CENTER TO END ELBOW, TEE CROSS 'A'			CENTER TO END 45 ELBOW 'C'			OUTSIDE DIAMETER OF BAND 'H'			END TO END COUPLING W	END TO END CAP P		OUTSIDE DIAMETER D	
		2000	3000	6000	2000	3000	6000	2000	3000	6000	3000 & 6000	3000	6000	3000	6000
6	1/8	21	21	25	17	17	19	22	22	25	32	19	-	18	22
8	1/4	21	25	28	17	19	22	22	25	33	35	25	27	19	25
10	3/8	25	28	33	19	22	25	25	33	38	38	25	27	22	32
15	1/2	28	33	38	22	25	28	33	38	46	48	32	33	28	38
20	3/4	33	38	44	25	28	33	38	46	56	51	37	38	35	44
25	1	38	44	51	28	33	35	46	56	62	60	41	43	44	57
32	1-1/4	44	51	60	33	35	43	56	62	75	67	44	46	57	64
40	1-1/2	51	60	64	35	43	44	62	75	84	79	44	48	64	76
50	2	60	64	83	43	44	52	75	84	102	86	48	51	76	92

Threads shall be NPT as per ASME B 1.20.1 Other forms of threads can also be provided on request.

## FORGED UNIONS

Product	Union	Union
Product Standard	BS:3799	BS:3799
Material	A105, LF2, F5, F9, F11, F22, F304, F304L, F316, F316L, F321	A105, LF2, F5, F9, F11, F22, F304, F304L, F316, F316L, F321
End Detail	Screwed Female NPT Threads to ANSI/ASME B1.20.1	Socket weld to BS:3799

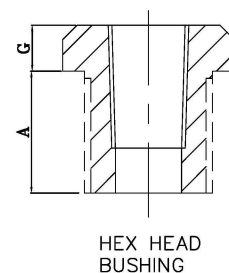
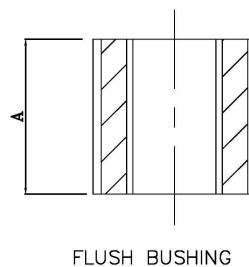
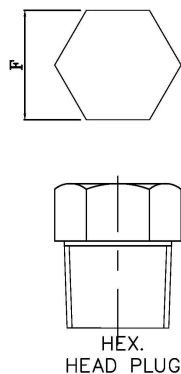
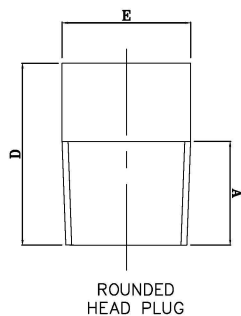
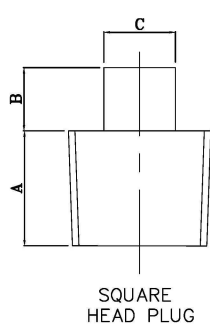


THREADED UNION				SOCKET WELDING UNION					
3000 LB				3000 LB					
DN	NOMINAL PIPE SIZE	END TO END A	HEIGHT OF UNION NUT C(MIN)	DN	NOMINAL PIPE SIZE	DEPTH OF SOCKET S(MIN.)	DISTANCE BETWEEN BOTTOMS OF SOCKETS A(MIN.)	BORE DIAMETER OF SOCKETS B (MIN.)	HEIGHT OF NUT G (MIN.)
6	1/8	40	16	6	1/8	10	17	10.7	16
8	1/4	43	18	8	1/4	10	17	14.1	18
10	3/8	48	19	10	3/8	10	17	17.6	19
15	1/2	51	21	15	1/2	10	18	21.8	21
20	3/4	57	24	20	3/4	13	20	27.4	23
25	1	64	25	25	1	13	26	34.1	25
32	1-1/4	70	29	32	1-1/4	13	28	42.9	29
40	1-1/2	79	30	40	1-1/2	13	30	49.0	30
50	2	89	37	50	2	16	36	61.0	37

Threads shall be NPT as per ASME B 1.20.1 Other forms of threads can also be provided on request.

## FORGED PLUGS & BUSHINGS

Product	Plug
Product Standard	ASME BS:16.11
Material	A105, LF2, F5, F9, F11, F22, F304, F304L, F316, F316L, F321
End Detail	Screwed Female NPT Threads to ANSI/ASME B1.20.1



DN	NOM. PIPE SIZE	LENGTH A (MIN.)	PLUG SQ. HEAD		ROUND HEAD PLUGS		HEX PLUGS & BUSHINGS		
			HEIGHT OF SQ.	WIDTH FLATS	NOM. DIA OF HEAD	LENGTH	WIDTH FLATS	HEX HEIGHT (MIN.)	
								BUSHINGS	PLUG
			B (MIN.)	C (MIN.)	E	D(MIN.)	F(NOM.)	G	H
6	1/8	10	6	7	10	35	11	-	6
8	1/4	11	6	10	14	41	16	3	6
10	3/8	13	8	11	18	41	18	4	8
15	1/2	14	10	14	21	44	22	5	8
20	3/4	16	11	16	27	44	27	6	10
25	1	19	13	21	33	51	36	6	10
32	1-1/4	21	14	24	43	51	46	7	14
40	1-1/2	21	16	28	48	51	50	8	16
50	2	22	18	32	60	64	65	9	18
65	2-1/2	27	19	36	73	70	75	10	19

Threads shall be NPT as per ASME B 1.20.1. Other forms of threads can also be provided on request.





**Dealer:-**



**TUBES & VALVES MFG CO**

No 12 Singanna Naicken Street,  
Chennai 600 001.

Ph:- 044-2522 4353

Cell:- +91 80120 11666

Email:- [sales@tubesandvalves.com](mailto:sales@tubesandvalves.com)

Web:- [www.tubesandvalves.com](http://www.tubesandvalves.com)

**Manufacturer:**  
**LEADER VALVES LIMITED**